



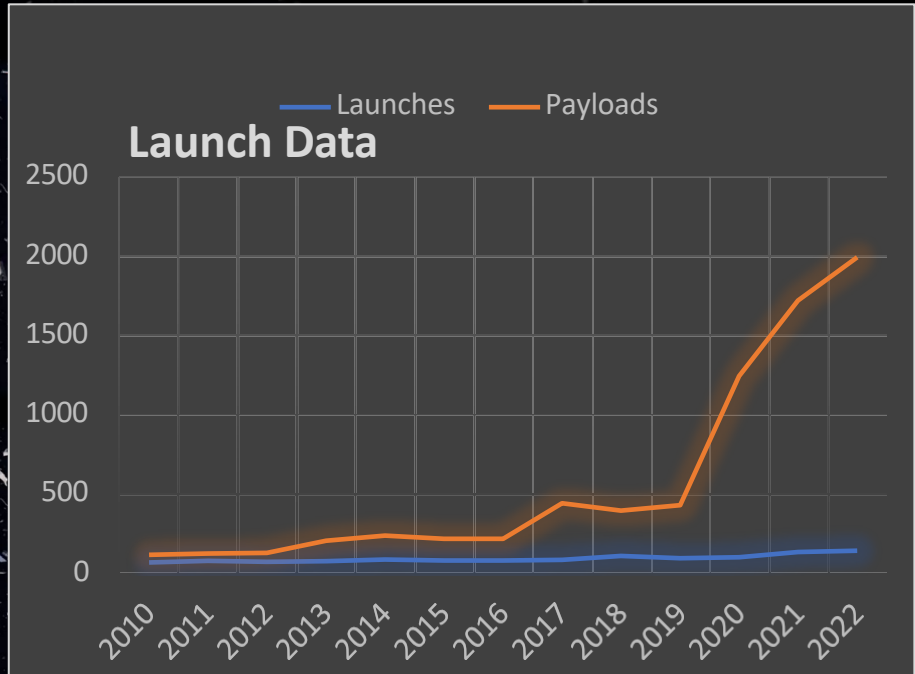
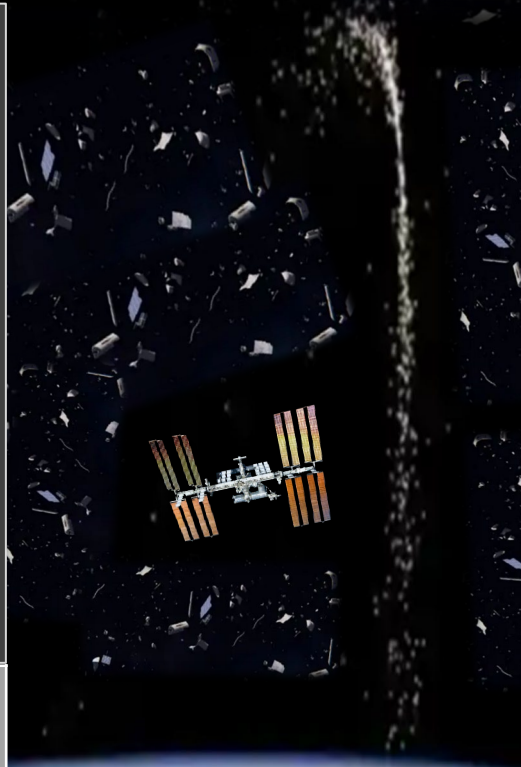
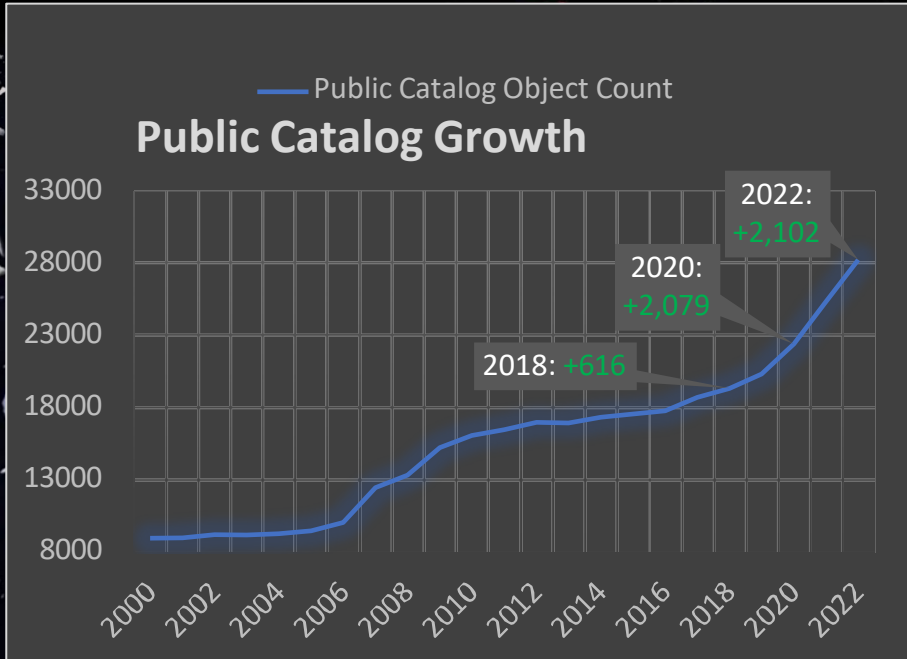
UNITED STATES SPACE COMMAND

Thomas A. Lockhart
Director of Capabilities
and Integration
USSPACECOM/J8



UNCLASSIFIED

Congested Space Domain



ISS Orbital Debris Conjunction Summary	Total
2019	226
2020	436
2021	445
2022	1331

COSMOS 1408 Orbital Debris Conjunction Summary	Total
Aug 2019 (USSC Stand-up)	25,359
Aug 2020	31,205
Aug 2021 (USSC at IOC)	34,880
Feb 2023	47,900

Objects Tracked	Total
Aug 2019 (USSC Stand-up)	25,359
Aug 2020	31,205
Aug 2021 (USSC at IOC)	34,880
Feb 2023	47,900

There has been nearly six-fold increase in total ISS conjunctions from 2019 to 2022, with the greatest contributing factor being COSMOS 1408 debris (ASAT event occurred Nov 2021). 52% of ISS conjunctions in 2022 were against COSMOS 1408 debris.



Joint, Combined, Partnered Approach

DOD / Civil

Elevating Space Commensurate With Role In National Security

Functions



Resources



Organizations



Joint Integrated Space Teams (JIST)



Allied Operations

Space Superiority Increasingly Reliant On Combined Operations



30+ Nations
New in 2020 / 2021 / 2022



Combined Space Operations Center
Vandenberg SFB, CA



Multinational Space Collaboration
USSPACECOM HQ, CO & Vandenberg SFB, CA



Countries with a Space Command



Commercial / Industry

Industry Advancements Enabling DoD Mission Execution

Enable & Augment Space Ops for Mission Accomplishment

16 commercial partners added in 2022 / Over 120 total

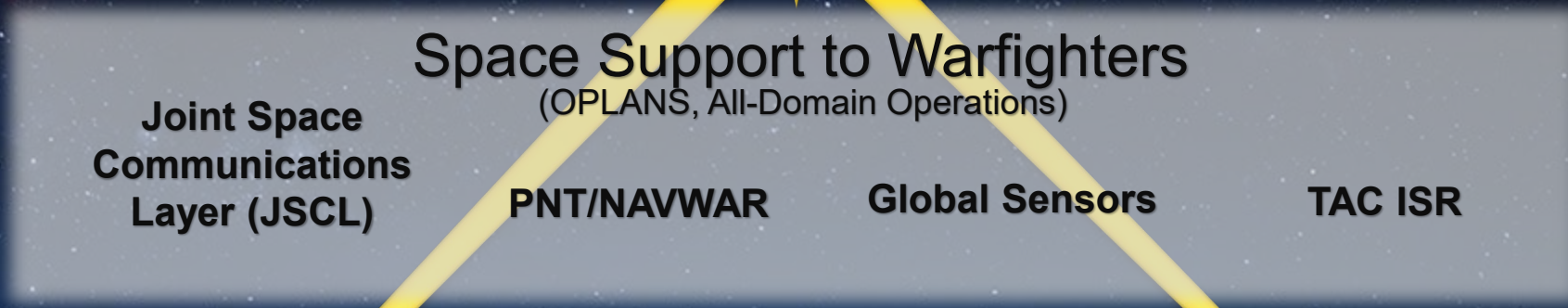


UNCLASSIFIED

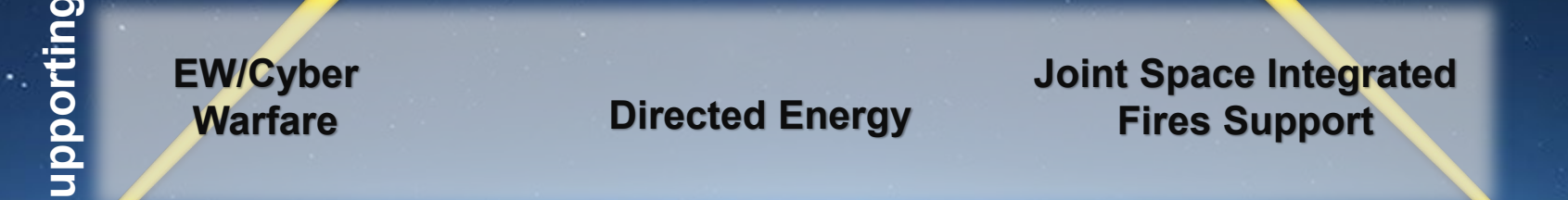
USSPACECOM Space Superiority ICD Framework

SPACE SUPERIORITY

Mission



Supporting



Foundational



UNCLASSIFIED

Space Mobility and Logistics Network Future State (2030+)

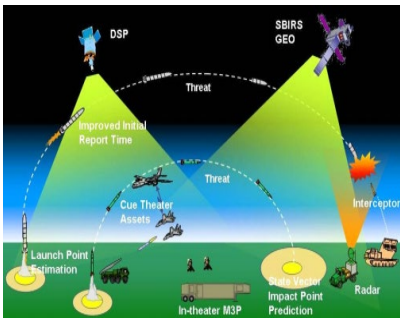




National Innovation Base



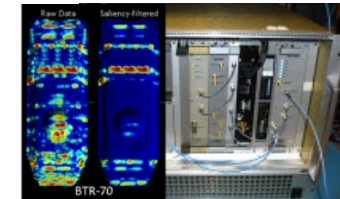
Space



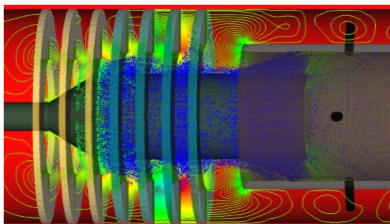
Energy/Networked Capabilities



Spectrum Management



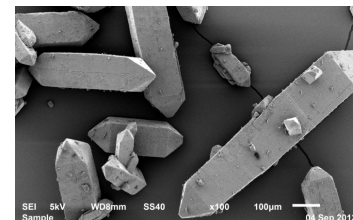
Integrated Digital Ecosystem



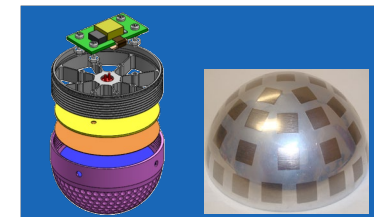
Human Performance



Meta- Material



Manufacturing Science



UNCLASSIFIED//CUI



NEVER A DAY WITHOUT SPACE

UNCLASSIFIED

Backup