

Kids Carnival, Health Fair,
Barbecue, Music and More

Don't Miss Your
2015 Annual Meeting!

JEMCOnews

A PUBLICATION FOR JACKSON EMC MEMBERS

September 2015



**STRONG ROOTS,
Bright Future**



President/CEO
Chip Jakins

STRONG ROOTS, Bright Future

Our vision is for Jackson EMC to be the best, forward-thinking, innovative, energy supplier providing a friendly and fulfilling work environment. How do we do that? This year, we began a strategic planning effort we'll use each year to ensure we continue to move toward that vision and constantly improve our service to you. Through the strategic planning process, we'll pick several issues that we feel should be addressed and focus on improving those issues. When we've addressed those, we'll move on to the next set. We will be constantly striving to achieve our vision and we will get better every step of the way.

Member-Focused

Jackson EMC members have used almost 5.2 billion kilowatt hours of electricity in the past 12 months, and your co-op now has \$930 million in plant assets. For the third year in a row, we've added more than 3,000 new meters, and now serve more than 217,500 meters. This year, we've invested \$31 million in the distribution network that serves you. During the year, we've won nearly 15 megawatts of competitive industrial load - companies that chose this cooperative because of the service we provide. Two large loads opened their doors - the Georgia Poultry Lab and the Northeast Georgia Medical Center Braselton campus.

In addition to new industrial customers, we're seeing residential construction pick up again, with Right Choice energy efficient homes going up in two multi-family communities and 15 single-family subdivisions. We've partnered with EMC Security to offer homebuyers home automation that can control door locks, thermostats and lights from a smartphone, and even use video and motion sensors to monitor activity in the home.

Gwinnett County's growth prompted us to begin construction of a new 17,000 square-foot administration building in Lawrenceville. The new building will replace the current facility that was built 30 years ago. We anticipate this building opening in July 2016.

Growth continues to require expansion and improvement of our distribution network. We completed construction of the Bramlett Shoals substation in Lawrenceville to provide

additional capacity around the Sugarloaf Parkway extension. It relieves demand on a nearby substation that was serving 6,000 members. We also modernized South Jackson's Attica substation to improve reliability, and constructed more than 50 miles of new lines this year.

Jackson EMC also responded to growing interest in solar energy. We signed on for a portion of the power from two large solar installations being developed in Jeff Davis County. And following the passage of EMC-supported solar legislation, we launched a new residential solar program to provide interested members with solar site surveys, financing and rebates.

Historic Storm

Weather is the single biggest variable affecting your power. It has the largest impact on your bill and is the most likely cause of an outage.

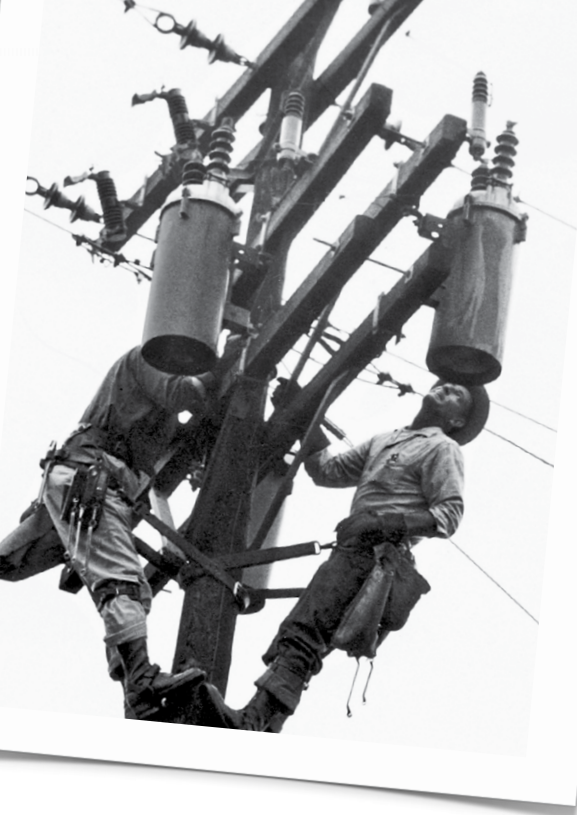


JEMCO news

VOL. 64, NO. 9, SEPTEMBER 2015
(ISSN 1061-5601), IS PUBLISHED
MONTHLY BY THE MEMBER
SERVICES DEPT. OF JACKSON
ELECTRIC MEMBERSHIP CORP.,
461 SWANSON DRIVE,
LAWRENCEVILLE, GA 30043.
SUBSCRIPTION \$3.50 PER YEAR
AS PART OF YEARLY MEMBERSHIP.
PERIODICALS POSTAGE PAID
AT LAWRENCEVILLE, GA AND
ADDITIONAL MAILING OFFICES.

April Sorrow, Editor.

POSTMASTER:
Send address changes to
Jemco News
461 Swanson Drive
Lawrenceville, GA 30043



In February, this cooperative was hit by an ice storm that caused the most widespread and extensive damage we've experienced in our nearly 80 years. More than 128,600 of our members lost power. Our system was devastated, with 182 broken poles pulled down by heavy ice on the lines and falling trees.

Our call for help received responses from 24 of our sister cooperatives. That's the spirit of cooperation. An additional 624 people joined Jackson EMC crews and set to work in single-digit temperatures. We are fortunate a FEMA federal disaster declaration made us eligible for federal funds to offset 75 percent of the cost of the damage.

Innovation

Technology made this year's storm unique. The smart meters we have installed reported 41,000 outages on their own. We had 18,000 members use our automated phone system and nearly as many use their computer or smartphone to report their outage. And while crews worked, members tracked restoration on our website and mobile website, which recorded nearly 900,000 page views.



Through a sophisticated network of about 213,000 AMI meters and computerized systems – Outage Management, Geographic Information, Customer Information, Supervisory Data Control and Acquisition – we monitor the flow of electricity through the 79 metering points, more than 13,500 miles of energized wire and thousands of pieces of equipment that deliver power to our members' homes and businesses constantly. These systems allow us to quickly identify and respond to outages, remotely engaging equipment or dispatching crews to make repairs.

A new automated distribution project begun last year will continue to improve our ability to respond to outages. Through this multi-year project, we will replace around 200 manually operated switches with reclosers. So far, we have 134 in place. These devices monitor the current in the line and operate independently, as well as remotely by our System Control Center, to keep the power on. Once installed, they help keep more members from losing power in the first place, and restore power more quickly when outages do occur.

YOUR Cooperative

This is your cooperative. You are member-owners of this business. Because we operate efficiently, your cooperative's electricity remains a bargain. Our board of directors and staff continue to conservatively manage Jackson EMC. As a not-for-profit cooperative, a portion of revenues left over after all the bills are paid each year (we call them "margin refunds") is returned to members at the end of the year. Last December, eligible Jackson EMC members received \$6 million in margin refunds. This December, we will mail \$6.5 million in refunds to more than 219,900 members who received service in 1989/1990 and/or 2014. With this refund, Jackson EMC has returned \$108 million to our members since its founding in 1938. ▲

STATS

\$6.5
million
in 2015

MARGIN REFUNDS

3,732
NEW METERS

217,500+
TOTAL METERS

\$31 million
invested in our distribution
network that serves you

13,657
MILES OF WIRE

5.2 billion
kWh USED

\$930
MILLION
IN PLANT ASSETS





Driving/Parking Directions

For the best experience, we encourage members to park in our off-site parking areas. Construction on Hwy. 82 and Commerce Road will include a detour that will impact traffic coming into Jefferson on the night of Annual Meeting. Shuttles run to two parking areas every 30 minutes and drop members off at the entrance to the meeting. Construction updates are available at www.jacksonemc.com.

To Off-Site Parking

Shuttle buses run every 30 minutes to drop you off at the Annual Meeting entrance.

To Park at Jackson County Comprehensive High School

1668 Winder Highway, Jefferson, GA

From Athens

- Take Hwy. 129 North
- At Arcade, go straight to take Jefferson Bypass (Damon Gause Bypass).
- Travel approximately three miles to the Hwy. 11 intersection.
- Turn left on Hwy. 11.
- The main entrance to the school is immediately on the right.

From Atlanta

- Travel I-85 North
- Take Exit 137 (Hwy. 129/Jefferson) and turn right (South) onto Hwy. 129/Hwy. 11 (Bypass).
- Travel south until reaching the Hwy. 11 intersection.
- Turn right onto Hwy. 11.
- The main entrance to the school is immediately on the right.

To Park at Jackson County Courthouse

5000 Jackson Parkway, Jefferson, GA

From I-85 North

- Exit I-85 at Dry Pond Road (Exit 140).
- Turn right onto Hwy. 82.
- Drive 2 miles to dead end, turn right to continue on Hwy. 82.
- Drive 3 miles, turn left onto General Jackson Parkway.
- Courthouse is on the left, about half a mile down Jackson Pkwy.

To Park at Jackson EMC

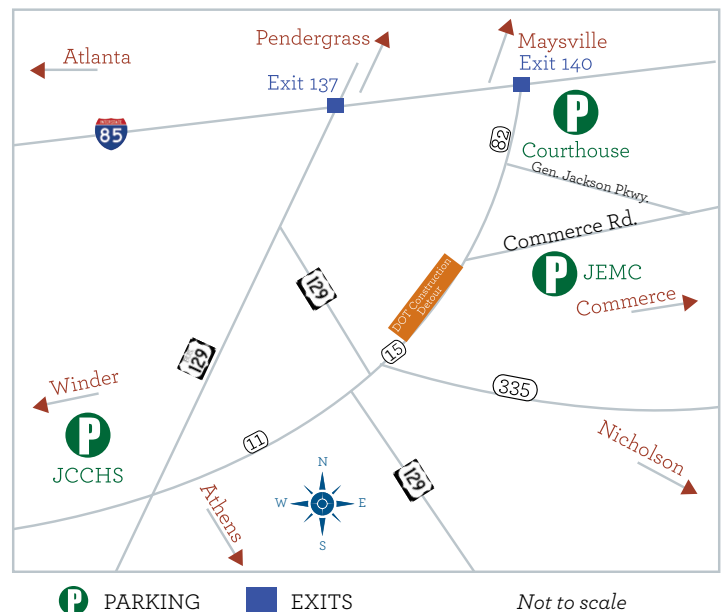
850 Commerce Highway, Jefferson, GA

Traveling I-85 North

- Take exit 137 and turn right onto Hwy. 129/Hwy. 11 (Bypass).
- Drive one mile and turn left onto Hwy. 129 (Bus.).
- At the second traffic light into downtown Jefferson, turn left onto Hwy. 15 (Alt.) which becomes 82/15 (Alt.).
- Follow detour signs to travel on Hwy. 15 N (Alt.) toward Commerce.
- Jackson EMC is located at 850 Commerce Hwy., on the right at the top of the hill.

From Athens

- Travel north on Hwy. 129.
- At Arcade, turn right onto Hwy. 129 (Bus.).
- At traffic light, turn right onto Hwy. 82/15.
- Follow detour signs to travel on Hwy. 15 N (Alt.) toward Commerce.
- Jackson EMC is located at 850 Commerce Hwy., on the right at the top of the hill.



Annual Meeting Activities

There's something for everyone at Annual Meeting. Children will enjoy inflatables, candy art and clowns, while adults learn about the cooperative's current operations and plans for the future. Everyone in attendance will receive one meal ticket for a barbecue chicken supper to be enjoyed onsite, and ice cream for dessert. Throughout the evening, *The Inspirations* will perform. Plus, members have a chance to win a door prize!

A Health Fair area offers free and low-cost health and wellness services. A Member Services area features products and services dedicated to energy efficiency, finance and security.

Make your reservations online today at www.jacksonemc.com/annualmeeting or mail the enclosed reservation card by **Friday, September 11**. We look forward to seeing you at Annual Meeting on Thursday, September 17.

Health Fair Services and Information Booths

Several health agencies from across our service area will offer basic health testing for members. Healthcare professionals will be onsite to:

- Check blood pressure and pulse rate
- Test glucose levels
- Perform sleep apnea screenings
- Test vision and eye health
- Measure height and weight for BMI
- Conduct hemoglobin checks
- Members may also have Child ID kits made, along with a variety of other free services, evaluations and information.

Member Services

As a member of Jackson EMC, you have access to products and services that save you energy and money, like these:

- Right Choice™ New Construction Program
- Personal Home Fitness Evaluation for Existing Homes
- Incentives, Loans and Rebates
- Home Fitness Monitor
- Green Power EMC
- EMC Security
- GEMC Federal Credit Union

Kids Carnival

Kids will enjoy attractions from 5:30 to 8:30 p.m. at the Kids Carnival, including:

- 22-foot Slide
- Kids' Zone
- Lil' Tykes Village
- Inflatables
- Obstacle Course
- Candy Art Station
- Clowns
- Games

Grand Prize and Other Gifts and Prizes

As has been our custom for decades, Jackson EMC will provide an attendance gift as a token of our appreciation for your attendance at Annual Meeting. Each registered account member receives a gift, along with chances to win a variety of door prizes. Throughout the evening, prize numbers are called, so be sure to attend the meeting to hear your number called out for a door prize.

This year's Grand Prize will help the lucky winner become more energy fit. Don't miss out on your chance to win the Grand Prize of **\$2,500 worth of energy efficient appliances of your choice!**

ANNUAL MEETING PROGRAM

Thursday, September 17
(All times approximate)

5:30 – 7:30 PM

- Registration
- Boxed Barbecue Dinner
- Member Services Area
- Health & Wellness Fair
- Prize Tickets

5:30 – 8:30 PM

- Kids Carnival

6:15 – 7:20 PM

- Early Prize Drawing
- Entertainment by *The Inspirations*

7:20 PM until Adjournment

- Invocation
- National Anthem
- Service Awards Recognition
- Meeting Called to Order
- Report of Quorum Present
- Official Notice of Mailing and Proof of Mailing
- Minutes of Last Meeting
- Board Chair's Report
- President/CEO's Report
- Election of Directors
- New Business
Member Vote on Bylaw Amendments
- Prize Drawings
- *The Inspirations*
- Grand Prize Drawing

JEMC BOARD OF DIRECTORS RECOMMENDS BYLAWS AMENDMENTS

Jackson EMC's Board of Directors has adopted a resolution supporting changes to several provisions of the cooperative's Bylaws associated with the nomination and election of directors. (Specifically, Article II, Sections 1, 3, 4, 5 and 7; and Article III, Section 4). Members will vote on these Bylaw amendments during the 2015 Annual Meeting, September 17.

The full text of the board resolution and recommended Bylaw amendments may be found on the cooperative's website at www.jacksonemc.com/bylawsamend or at any of the cooperative's local offices upon request. Questions regarding these changes can be emailed to info@jacksonemc.com or called to 706-367-6114.

Report to Members

		May 31, 2015	May 31, 2014	
Assets	BALANCE SHEETS			
	Utility Plant			
	Electric Plant in Service – At Cost	\$ 913,235,862	\$ 873,374,700	
	Construction Work in Progress	18,951,769	23,307,507	
	Gross Utility Plant	932,187,631	896,682,207	
	Accumulated Provision for Depreciation	(278,652,560)	(261,167,376)	
		653,535,071	635,514,831	
	Investments in Associated Organizations	136,015,825	126,060,611	
	Current Assets			
	Cash and Cash Equivalents	29,105,905	27,836,650	
	Accounts Receivable (Net of Accumulated Provision for Uncollectibles of \$4,378,997 in 2015 and \$3,751,638 in 2014)	29,493,767	23,513,996	
	Materials and Supplies	9,608,558	9,440,079	
	Prepaid Power Cost	57,805,360	22,514,600	
	Other	1,792,728	1,736,320	
		127,806,318	85,041,645	
	Deferred Debits	13,182,405	14,477,915	
	Total Assets	\$ 930,539,619	\$ 861,095,002	
	Members' Equity and Liabilities	BALANCE SHEETS		
		Members' Equity		
		Membership Fees	\$ 3,201,710	\$ 3,099,785
Patronage Capital		362,393,439	337,666,690	
Other Equities		608,475	604,247	
		366,203,624	341,370,722	
Long-Term Debt		446,208,566	404,281,844	
Other Long-Term Liabilities				
Accumulated Provision for Postretirement Benefits – Noncurrent		34,936,051	31,727,244	
Current Liabilities				
Long-Term Debt – Current Portion		13,802,000	12,211,000	
Accumulated Provision for Postretirement Benefits – Current Portion		1,667,000	1,545,000	
Accounts Payable		33,615,597	33,505,495	
Consumers' Deposits		10,588,591	9,907,860	
Other		16,086,743	15,274,041	
		75,759,931	72,443,396	
Deferred Credits		7,431,447	11,271,796	
Total Members' Equity and Liabilities		\$ 930,539,619	\$ 861,095,002	

Statements
of Revenue
and Patronage
Capital

STATEMENTS	May 31, 2015	May 31, 2014
Operating Revenues	\$ 514,976,926	\$ 486,442,180
Operating Expenses		
Cost of Power	386,666,245	369,273,613
Distribution Operations	12,163,796	12,954,020
Distribution Maintenance	16,874,339	16,320,932
Consumer Accounts	14,166,074	14,706,981
Consumer Information and Sales	7,802,033	7,837,519
Administrative and General	12,025,543	12,180,501
Depreciation	30,508,508	29,329,494
	480,206,538	462,603,060
Operating Margins Before Interest Expense	34,770,388	23,839,120
Interest Expense	21,332,480	21,763,698
Operating Margins After Interest Expense	13,437,908	2,075,422
Nonoperating Margins	7,121,628	6,230,678
Generation and Transmission Cooperative Capital Credits	9,795,585	8,483,651
Other Capital Credits and Patronage Capital Allocations	595,520	218,613
Net Margins	\$ 30,950,641	\$ 17,008,364
Patronage Capital - Beginning	337,666,690	326,206,982
Retirement of Patronage Capital	(6,223,892)	(5,548,656)
Patronage Capital - Ending	\$ 362,393,439	\$ 337,666,690

Jackson EMC Offices

1000 Dawsonville Highway
Gainesville, GA
(770) 536-2415

85 Spratlin Mill Road
Hull, GA
(706) 548-5362

850 Commerce Road
Jefferson, GA
(706) 367-5281

461 Swanson Drive
Lawrenceville, GA
(770) 963-6166

EMC Security
55 Satellite Blvd, NW
Suwanee, GA
(770) 963-0305 or
(706) 543-4009

PERIODICALS
POSTAGE PAID

www.jacksonemc.com



www.twitter.com/jacksonemc



www.facebook.com/jacksonemc

WHAT'S COOKIN'?

"This recipe pleases the picky eaters at my house and it is so easy to make."

— Wanda Bias — Commerce, GA

Easy Peasy Chimichanga

Ingredients:

- 1 lb. ground beef
 - ¼ cup taco seasoning mix
 - 1 cup white cheese (queso) dip
 - 10-12 flour tortillas (soft taco size)
 - Pam cooking spray
 - Parchment paper or non-stick aluminum foil
 - Salsa and sliced jalapeños (optional)
- Makes 8 Chimichangas.

Instructions:

1. Brown beef in skillet; cook fully.
2. Drain any fat and add seasoning mix.
3. Prepare cheese while beef is cooking.
4. Add 1 cup of cheese to cooked meat in skillet. Stir.
5. Line a large cooking sheet with parchment paper or non-stick aluminum foil.
6. Lay 1 tortilla flat on flat surface and put ¼ cup of the meat and cheese mixture in shell.
7. Fold over sides of shell and roll up.
8. Place on prepared pan, folded end down.
9. Once all rolls are on the pan, spray each one liberally with Pam.
10. Place in oven, heated to 375°
11. Cook for 15 minutes.
12. Remove from oven, turn over rolls, and spray again with Pam.
13. Return to oven and cook an additional 15 minutes, or until lightly browned.
14. Top with salsa and jalapeños and serve with Spanish rice and refried beans.



Submit
Recipes to:

Cooperative Cooking
Jackson EMC
P.O. Box 38
Jefferson, GA 30549