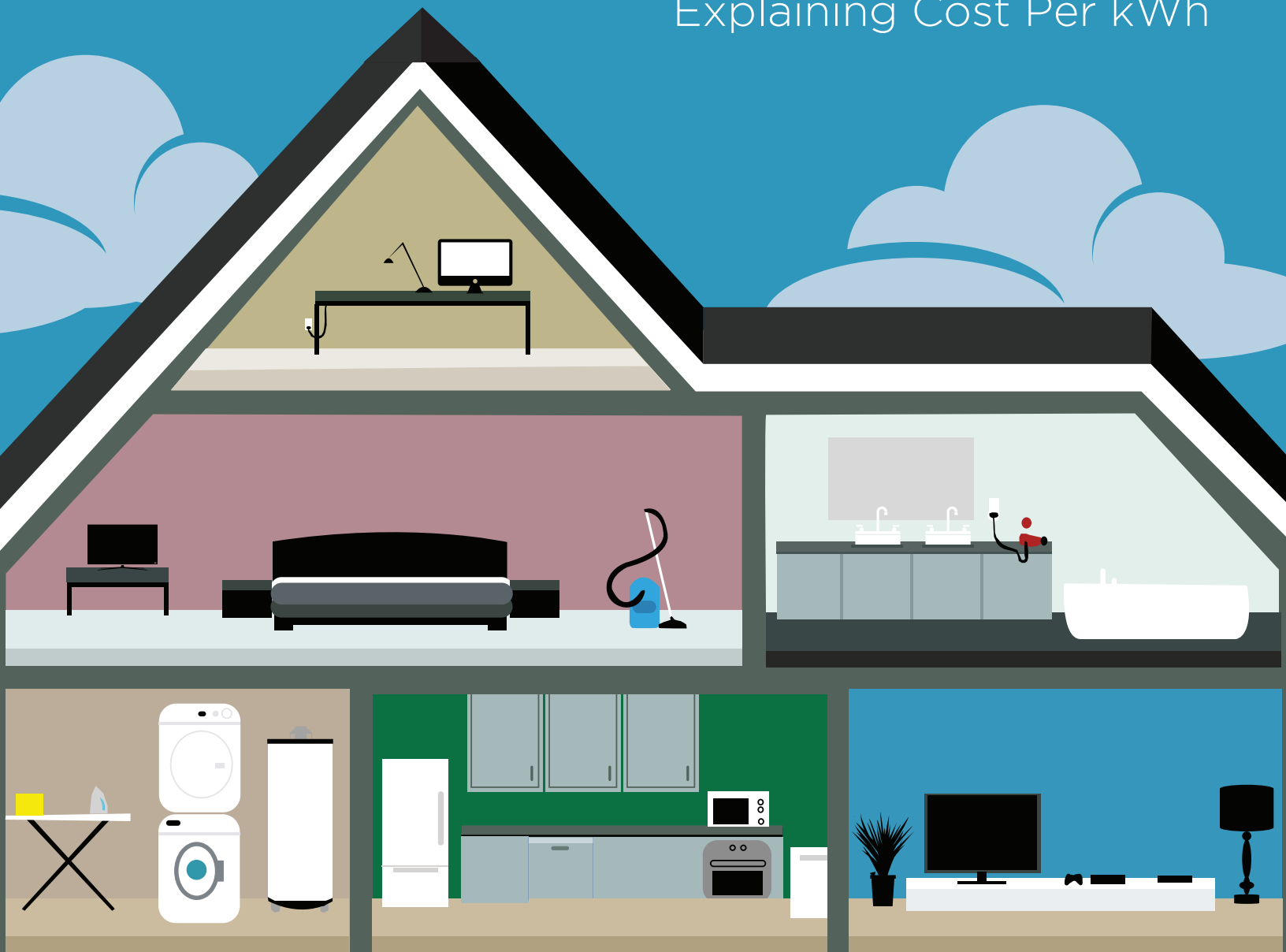


# JEMCOnews

A PUBLICATION FOR JACKSON EMC MEMBERS

## ENERGY USE 101

Explaining Cost Per kWh



JULY 2016 | IN THIS ISSUE

SAVE THE DATE: ANNUAL MEETING SEPTEMBER 15

JACKSON EMC'S TREE MAINTENANCE PROGRAM

COMMUNITY IMPACT: RAINBOW VILLAGE, INC.



# PLANNING FOR THE LOWEST POSSIBLE COST

Most members see their largest bills during the summer. But, while they are the largest you see all year, Jackson EMC members pay some of the lowest rates in the state. To keep rates low we accurately forecast how much electricity we'll need, build resources and contract with power suppliers to provide electricity at a set low rate, develop partnerships with our members to meet demand and ultimately, manage money wisely.

Seventy-five cents of every dollar paid to Jackson EMC is used to purchase the power that flows to our members' homes and businesses. And one of the most important things we do to ensure you pay the lowest possible price for power is plan for how that money is spent. Accurate forecasting means we anticipate how much electricity people will need, where they will need it and when. This helps us supply our members with the reliable electricity they need without overinvesting in generators and powerlines.

Electricity works in a system of supply and demand. Ideally, you would sell the same amount of electricity all the time, but life doesn't work that way. We use less electricity at night and during the spring and fall. Because usage fluctuates, we have to plan. These plans involve building generators, transmission lines and substations so we can meet demand.

Our plan includes a contract with a power supplier who purchases a portion of our electricity on the wholesale market at a guaranteed set price. So far this year, about 30 percent of our electricity has been purchased, rather than generated through our own facilities. Without this contract, we'd be susceptible to the price swings in the market due to supply and demand. We've seen times where the market price to

purchase power is a dollar or more per kWh. That's ten times higher than what our members are charged today.

In the electric business we have a term called peak demand, which is the most energy we'll ever use in an hour. Reducing peak demand saves money because we don't have to invest in more generators, transmission lines or substations. To minimize our peak demand on some of those scorching summer days, some of our members have enrolled in a load management program. We remotely turn off air conditioners and water heaters for a few minutes at a time to cut back on electric use. We save nearly half a million dollars a year due to the load management program. The members enrolled are paid to participate, but we all benefit.

Giving our members the best possible value at the lowest possible cost is our goal. Providing you with the information and programs you need to manage your electricity use is important. If you want more information about how to manage your energy use, please see our tips in this issue or go online for a list of tips from our energy coach. (*Tips are available at: [www.jacksonemc.com/playbook](http://www.jacksonemc.com/playbook)*).

Reach out to your co-op president, send an email to [chip@jacksonemc.com](mailto:chip@jacksonemc.com).

**Chip Jakins, President/CEO**

## NEED TO KNOW: ANNUAL MEETING NOTICE TO MEMBERS



Dear Member:

Official notice is hereby given that the 2016 meeting of the members of Jackson Electric Membership Corporation will be held at the headquarters in Jefferson, Ga., on Thursday, September 15, 2016. Registration will begin at approximately 5:30 p.m. The meeting will be called to order at approximately 7:20 p.m. by the chairperson. The purpose of the meeting is to:

1. Receive reports of officers, directors and committees;
2. Elect three directors; and
3. Handle all other business which may properly come before the meeting or any adjournment thereof.

Prizes, entertainment, a box supper, important business and other special programs will be featured at this meeting. You are requested to be present.

Sincerely,  
Lynn Price, Secretary | Board of Directors

FEATURED  
RECIPES RECEIVE

**\$200**

PRIZE  
PACKAGE

## BBQ-Spice-Rubbed Skirt Steak with Charred Onions & Jalapeños



“Perfect for morning marinade prep to have ready for lunch!” – SIMON MAY, GAINESVILLE, GA

### STEAKS

- 2 16 oz. skirt steaks
- 2 tablespoons balsamic vinegar
- 2 tablespoons apple cider vinegar
- 2 tablespoons corn oil
- 1/2 cup ketchup

### SPICE RUB

- 2 tablespoons chili powder
- 2 tablespoons light brown sugar
- 1 tablespoon onion powder
- 2 teaspoons garlic powder
- 2 teaspoons salt
- 1 teaspoon smoked paprika
- 1 teaspoon dried oregano

### CHARRED VEGETABLES

- 2 white onions, sliced into 1-inch rounds
- 6 jalapeños, seeded and chopped lengthwise
- 4 small red and yellow bell peppers, seeded and sliced
- 1 1/2 tablespoons butter
- 1 cup chicken stock
- 2 sprigs fresh thyme

### DIRECTIONS

Combine balsamic vinegar, cider vinegar, corn oil and ketchup in a bowl. Add to skirt steaks and marinate for two hours. Remove steaks, blot excess marinade with a paper towel, and rub both sides with spice rub.

Sear steaks on each side. Continue cooking on grill until desired temperature. Serve topped with charred onions and jalapeños.

Char vegetables on grill. Place all vegetables in pan, then add butter, stock and thyme, and cook uncovered over medium heat until vegetables are fork-tender and broth is reduced, about 20 minutes.



SEND YOUR BEST TAILGATING RECIPES: ASORROW@JACKSONEMC.COM OR MAIL TO: COOPERATIVE COOKING | JACKSON EMC | PO BOX 38 | JEFFERSON, GA 30549

## JACKSON EMC'S TREE MAINTENANCE PROGRAM

When trees grow into electrical lines, they can create safety hazards and disrupt service. During high winds, strong thunderstorms or winter ice storms, limbs and even whole trees can fall on electric lines, tearing down energized lines and equipment.

Jackson EMC maintains the area around the lines, known as the right-of-way, to keep members and employees safe around the power lines. The water, sap and chemicals in trees are excellent electricity conductors. If a tree has grown into a power line, power can travel through the tree to the ground and create an electrocution hazard. Trees touching power lines can also cause fires.

HERE ARE THE FACTS ABOUT THE PROGRAM, MAINTAINING THE 6,574 MILES OF OVERHEAD WIRE POWERING THE HOMES AND BUSINESSES OF JACKSON EMC'S MEMBERS.

### WHAT?

We consider several factors when pruning a tree for line clearance, in priority order: public and right-of-way worker safety, service reliability, correct arboriculture pruning techniques and, finally, aesthetics.

### WHY?

We only cut what is necessary to keep people safe and to limit threats to reliability, which is a clearance of 15 feet in each direction of the line: left, right and under.

### WHERE?

One crew can clear three miles a month. In all, our crews clear 1,200 miles each year; we can reach each mile of line about every five to six years.

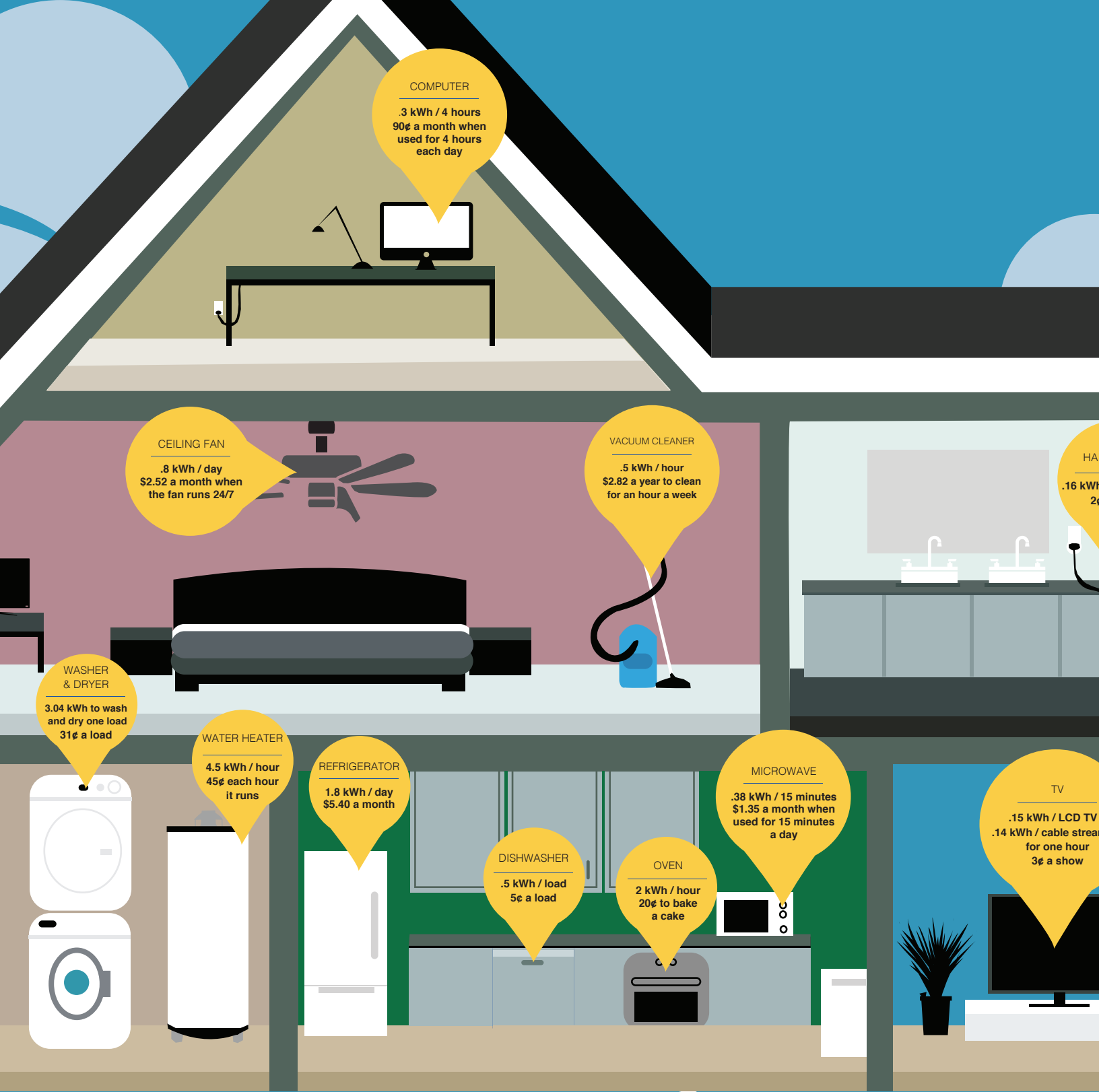
### WHEN?

Crews work year-round, Monday to Thursday from 6:30 a.m. to 5 p.m.



FOR MORE INFORMATION VISIT ABOUT THE PROGRAM, VISIT [JACKSONEMC.COM/TREE](http://JACKSONEMC.COM/TREE)





COMPUTER  
 .3 kWh / 4 hours  
 90¢ a month when  
 used for 4 hours  
 each day

CEILING FAN  
 .8 kWh / day  
 \$2.52 a month when  
 the fan runs 24/7

VACUUM CLEANER  
 .5 kWh / hour  
 \$2.82 a year to clean  
 for an hour a week

HAIR DRYER  
 .16 kWh / 20 minutes

WASHER & DRYER  
 3.04 kWh to wash  
 and dry one load  
 31¢ a load

WATER HEATER  
 4.5 kWh / hour  
 45¢ each hour  
 it runs

REFRIGERATOR  
 1.8 kWh / day  
 \$5.40 a month

DISHWASHER  
 .5 kWh / load  
 5¢ a load

OVEN  
 2 kWh / hour  
 20¢ to bake  
 a cake

MICROWAVE  
 .38 kWh / 15 minutes  
 \$1.35 a month when  
 used for 15 minutes  
 a day

TV  
 .15 kWh / LCD TV  
 .14 kWh / cable streamer  
 for one hour  
 3¢ a show

# ENERGY USE 101

Explaining Cost Per kWh

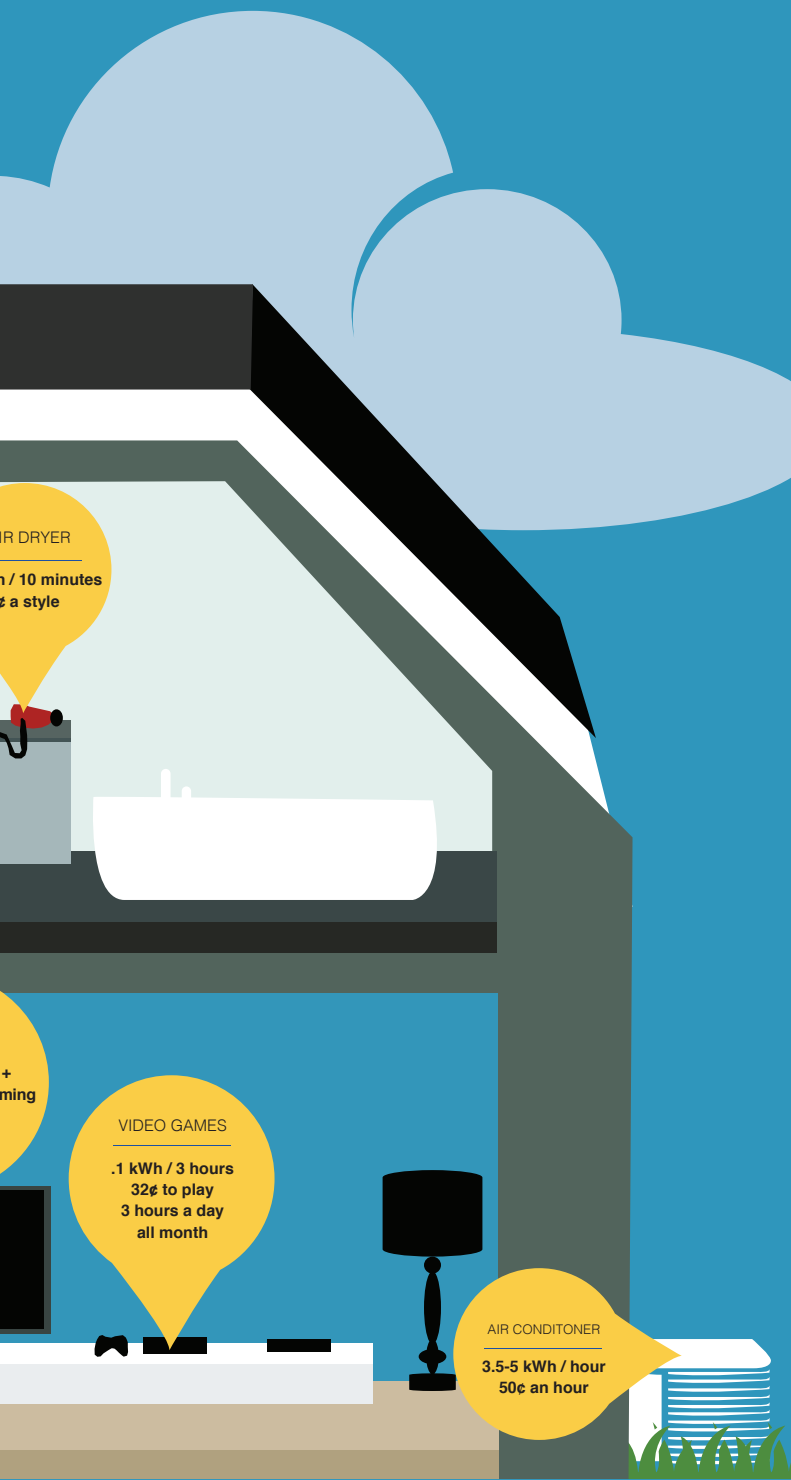
## Managing your electric bill is

Cooling, heating (45%) and water heating are the largest energy consumers in a home. But, you don't have to sweat to cut down on energy use. You can save a lot of electricity, and what doesn't cost a lot of money.

Electric companies bill in kilowatt-hours (kWh). The average household uses about 10¢ per kWh.

Resource: Calculations based on U.S. Department of Energy  
<http://energy.gov/energysaver/estimating>





It's a lot easier if you know where to cut back. Heating and cooling (18%) are the top energy users at home. Cut back on your electric bill. Knowing what uses a lot of energy, and how to manage it, can help you manage your usage.

hours. The average Jackson EMC member pays

Department of Energy Appliance Energy Calculator.  
http://www.eia.gov/appliance-and-home-electronic-energy-use

## DYK?

About 50% of your electric bill goes to heating or cooling the air inside your home. Make the most of your investment in comfort by keeping that conditioned air inside your home.

# WAYS TO SAVE

LISTEN TO YOUR DAD: DON'T AIR CONDITION THE NEIGHBORHOOD!

## FIND AND FIX AIR LEAKS



To check for air leaks around doors: Stand back and look at the door, if you see sunlight around the edges, your conditioned air is escaping. You can also use a smoke pen or lit incense to check for leaks.



Add weather stripping to areas where air leaks occur.



Check the bottoms of doors to make sure thresholds are sealing when closed, if not, replace them.



Caulk and weather strip doors and windows that leak air.



Install foam gaskets behind electric outlets and switch plate covers on exterior walls.



JACKSON EMC HAS REBATES FOR MEMBERS WHO NEED TO REPLACE THEIR HEAT PUMP. LEARN MORE AT [WWW.JACKSONEMC.COM/REBATES](http://WWW.JACKSONEMC.COM/REBATES)

## DYK?

The average home has air leakage equal to a two-square-foot hole? That's like leaving a medium-sized window open 24-hours a day.

## OPERATION ROUNDUP: YOUR DONATIONS AT WORK

The Jackson EMC Foundation Board of Directors awarded

**\$99,735 IN GRANTS**

during its May meeting, including **\$90,985 to organizations** and **\$8,750 to individuals**.

### ORGANIZATIONAL GRANT RECIPIENTS:



#### **\$15,000 | Boys & Girls Clubs of Metro Atlanta's Lawrenceville Unit**

For its Homework Help/Afterschool Program, which uses staff and volunteers to provide club members with homework help, specialized tutoring and high-yield learning activities to improve baseline math and reading skills.

#### **\$15,000 | Lindsay's Legacy, Inc.**

To help fund the coordinator's position for a program that recruits and trains adult mentors to work with students in kindergarten through 12th grade in all three school systems within Jackson County, helping to ensure those young people become healthy, educated and employable.

#### **\$15,000 | MedLink Georgia**

A nonprofit primary medical care network that provides care to those who lack access to quality medical care because of finances, transportation or few local physicians, to purchase equipment for six new examination rooms in their expanded Colbert facility that serves Madison, Clarke and Oglethorpe counties.

#### **\$14,985 | Boy Scouts of America – NEGA Council**

To provide uniforms, handbooks and summer camp fees that will help underprivileged youth participate in scouting, teaching them to make ethical choices and promoting citizenship, leadership, mental and physical fitness.

#### **\$10,000 | Interfaith Hospitality Network of Athens**

A network of 23 area congregations and 750 volunteers that provides temporary housing and services to homeless families in need, to cover transportation expenses, emergency medical, dental and financial needs, and provide childcare so homeless parents can work or seek work.

#### **\$6,500 | Athens-Clarke County Treatment and Accountability Court**

A partnership of court, law enforcement and community mental health treatment providers that jointly work to improve services to offenders with serious and persistent mental health issues, to provide basic dental and vision care, and respite housing to transition participants from jail into the community.

#### **\$5,500 | FOCUS (Families of Children Under Stress)**

A nonprofit agency serving children, teens and adults with developmental disabilities and their families, to help provide Camp Hollywood in Lawrenceville, a unique summer day camp where children with developmental disabilities can build social skills, self-respect, character and community living skills.

#### **\$5,000 | Quinlan Visual Arts Center**

To enable about 40 disadvantaged, but exceptional students with exemplary artistic skills entering 1st-8th grades at Title I schools in Barrow, Hall, Jackson, Gwinnett and Lumpkin counties to attend one-week Art Camp sessions.



#### **\$4,000 | Disabled American Veterans – Chapter 92**

For its Veterans Relief Fund, which provides assistance for emergency needs such as rent, medical bills, groceries, or a bus ticket home to veterans and their families.

### INDIVIDUAL GRANT RECIPIENTS:

**\$3,500** to help purchase a handi-capped accessible van for a man left a quadriplegic by an accident.

**\$3,500** to purchase a lightweight electric wheelchair and hand controls for a woman who lost the use of her legs following vascular surgery.

**\$1,750** to purchase dentures for a low-income senior citizen.

## FOUNDATION FACTS



**89%**

OF MEMBERS  
CONTRIBUTE



**\$89,140**

AVERAGE AMOUNT  
MEMBERS  
CONTRIBUTE  
EACH MONTH



**1088**

GRANTS  
AWARDED TO  
ORGANIZATIONS



**330**

GRANTS TO  
INDIVIDUALS



**\$11 MILLION**

DONATED IN  
10 YEARS



FOR MORE INFORMATION ABOUT THE JACKSON EMC FOUNDATION, OR TO APPLY FOR A GRANT, VISIT [JACKSONEMC.COM/FOUNDATION](http://JACKSONEMC.COM/FOUNDATION)



Decorated with colorfully painted walls, rainbows and stuffed animals, the cheerful classrooms at Rainbow Village's new community center in Duluth belie the fact that many of its students wind up here because they've been homeless. [Since 1991, Rainbow Village in Duluth has opened its doors to families in need](#); welcoming them to furnished apartments that become home while they learn to navigate past the traumas that led to and included homelessness.

Rainbow Village residents are required to pay 30 percent of their income for housing and must attend weekly classes on parenting, home management, financial literacy, workforce development, and health and wellness. After-school programs are provided for their children, along with mental health support programs for the entire family. Families are allowed to stay at Rainbow Village for one to two years; graduates of the program receive continuing support and mentoring.

"Rainbow Village provides the setting, security, support and time needed for families to regain footing in their lives," says Karen LaFontaine, development director at Rainbow Village.

A recent graduate of the program and single mother of five children, ages 5 to 15, Tamika has nothing but good things to say about Rainbow Village, which she credits with helping her get back on her feet.

Things had been going well for Tamika until 2012. A recent college graduate, she had purchased a townhouse in Lawrenceville and was working at a public school as a paraprofessional for special needs children. She had no trouble making payments on her new home — until the school where she worked lost the Title 1 funding that had paid her wages, which meant she, in turn, lost her job.

"I was out of work for eight months and used up all my savings while I looked for a job," says Tamika, recalling how she moved her family into a hotel after she lost the townhouse. Fearing the stigma of homelessness, she didn't know what to tell her children.

"I was afraid it would be the roughest thing ever, but when the Rainbow Village social worker handed me a key and said go on in, I couldn't do anything but cry," she says. "It was nicer than what I had been paying for, and the people took us in as if we were family members."

For the next 18 months, Tamika and her children turned homelessness into hopefulness. The kids thrived in daycare and after-school programs at Rainbow Village. Tamika learned how to manage her finances and how to promote herself positively in order to gain employment. She learned to shed stigmas associated with homelessness and to share concerns with her children.



*"We transform lives by doing what short term shelters cannot by permanently breaking the cycle of homelessness, poverty and domestic violence."*

- Karen LaFontaine

Tamika credits Rainbow Village with helping her family find its way. She has a new job, as a paraprofessional in another public school, and a new home. Her kids are healthy and happy, and she feels the lessons she learned at Rainbow Village are largely responsible.

Since awarding its first grant in September 2006 for \$15,000 for transitional housing assistance, the [Jackson EMC Foundation has helped fund Rainbow Village with \\$85,000 in grants](#) targeting assistance in the transitional housing program, financial counseling, children and youth programming, and salaries for case managers.



TO LEARN MORE, VISIT [WWW.RAINBOWVILLAGE.ORG](http://WWW.RAINBOWVILLAGE.ORG)

**YOUR POWER.  
YOUR COMMUNITY.**

A PUBLICATION FOR  
JACKSON EMC MEMBERS

**JACKSON EMC OFFICES**

1000 Dawsonville Highway  
Gainesville, GA  
(770) 536-2415

85 Spratlin Mill Road  
Hull, GA  
(706) 548-5362

850 Commerce Road  
Jefferson, GA  
(706) 367-5281

461 Swanson Drive  
Lawrenceville, GA  
(770) 963-6166

**EMC SECURITY**

55 Satellite Blvd., NW  
Suwanee, GA  
(770) 963-0305 or  
(706) 543-4009

PERIODICALS  
POSTAGE PAID

[jacksonemc.com](http://jacksonemc.com) |  @JacksonEMC |  jacksonemc |  JEMCTV1 |  jackson\_emc



## VEHICLES FOR SALE

JACKSON EMC HAS THE FOLLOWING EQUIPMENT  
FOR SALE TO MEMBERS AND EMPLOYEES.

Sealed bids will be accepted at Jackson EMC headquarters in Jefferson until 3 p.m., August 12, 2016, after which time bids will no longer be accepted. Jackson EMC reserves the right to accept or reject any and all bids.

These vehicles are being sold in "as is" condition with no written warranties. Vehicles may be viewed at the Jackson EMC office in Jefferson, located at 850 Commerce Highway, on **Tuesday, August 2, and Thursday, August 4, between the hours of 2 p.m. and 7 p.m.** Come by at these dates and times **ONLY** to view the equipment.

The list below contains the types and approximate quantities of the equipment and vehicles to be sold. All equipment and vehicles are retired from Jackson EMC's fleet and are generally five years old or older with odometer readings above 100,000 miles. This list is subject to changes, additions and/or deletions. Standard bid sheets and a complete vehicle list will be provided in our main lobby on viewing dates.

2 FULL-SIZE PICKUPS  
9 MID-SIZE PICKUPS  
2 MID-SIZE SEDANS  
1 FULL-SIZE SEDAN  
1 MINI PASSENGER VAN  
1 CARGO VAN

2 DERRICK TRUCKS  
2 40' SERVICE  
BUCKET TRUCKS  
1 35' SERVICE  
BUCKET TRUCK  
1 60' BUCKET TRUCK

