

JACKSON
ELECTRIC MEMBERSHIP CORPORATION™

JEMCOnews

A PUBLICATION FOR JACKSON EMC MEMBERS

HOW ELECTRICITY GETS TO YOU

MAY 2016 | IN THIS ISSUE

SUMMER RATES IN EFFECT
RIGHT CHOICE NEW HOMES
DON'T TOY WITH ELECTRICITY



SAFE AND SOUND

At the end of every day, we want everyone to go home the same way they arrived.

It's an easy thing to say, but hard to deliver with the type of work we do and the number of vehicles we have on the road. Electricity helps us live our lives more comfortably, but it's also inherently dangerous. I don't ever want to make a phone call to tell a loved one their father or wife has been injured at work. That is why we take steps to ensure they are safe while they do their job.

Did you know a hole the size of a pinhead in a lineman's rubber glove could end his life? So, we check them regularly and replace them every other month. The plastic liner in a bucket truck protects them, too. Using a dielectric test for the bucket liners, we immerse the liner in a tank of water and make sure the water inside stays neutral while we shock the water around it. If there are cracks or holes in the liner, the water inside would become energized. When at work, our linemen would be in danger in those buckets, so we test regularly.

We want the same protection for our community, which is why we offer education to safeguard the public. Using Powertown and our safety demonstration trailer, we work closely with schools to educate students about the dangers associated with electricity, and with EMTs and firefighters to help them work safely in hazardous areas. We make necessary decisions to trim

trees, which means we're keeping children from climbing trees growing too close to power lines.

At Jackson EMC, we have a strong safety culture and we have an obligation to protect the public. Every employee spends at least 20 hours a year focused on safety education. We all are certified in CPR, First-Aid, fire safety and defensive driving. This training keeps us safe at work, but it also helps us protect our community.

Safety is important to me, but I know it's important to everyone who works at Jackson EMC. I know this because we've asked. Our employee survey tell us that people who work here feel safe. Our strong safety culture is due to the hard work from each and every employee. Kudos to our safety team: Tim Sweat, Steve Chambers and Terry Jones who work to train our staff, keep our equipment tested and stay active educating the community to be sure everyone is safe around electricity.

Have thoughts on my column?
Send me a note to chip@jacksonemc.com.

Chip Jakins, President/CEO

WAYS TO SAVE

DON'T LET THE RISE IN TEMPERATURE SCORCH YOUR BILL



Caulk and weather strip around door and window frames. Seal cracks and penetrations on the exterior and interior of the home, especially around plumbing penetrations.



Keep the outdoor HVAC unit free of leaves, grass, shrubs or anything that can block airflow. Clear at least six feet of space above and two to three feet of space around the outdoor unit.



With the changing season, be sure the fireplace damper is closed and set ceiling fans to run counterclockwise.

HOME

PERFORMANCE TESTING

Not only do we adhere to high construction standards, but third party independent testing confirms that energy-efficient construction is working.

GUARANTEED

Each Right Choice Certified Home provides a one-year Comfort Warranty and a three-year Energy Usage Warranty for the heating and cooling system.

DESIGNED BY ENGINEERS

Before construction begins, a mechanical engineering firm properly sizes your heating and cooling system and duct design to achieve maximum efficiency levels.

ENERGY ADVANTAGE RATE

This special rate is designed to save homeowners approximately 5% on their annual energy bill. An average \$200 monthly bill would yield \$120 savings per year.

EMC SECURITY HOME AUTOMATION

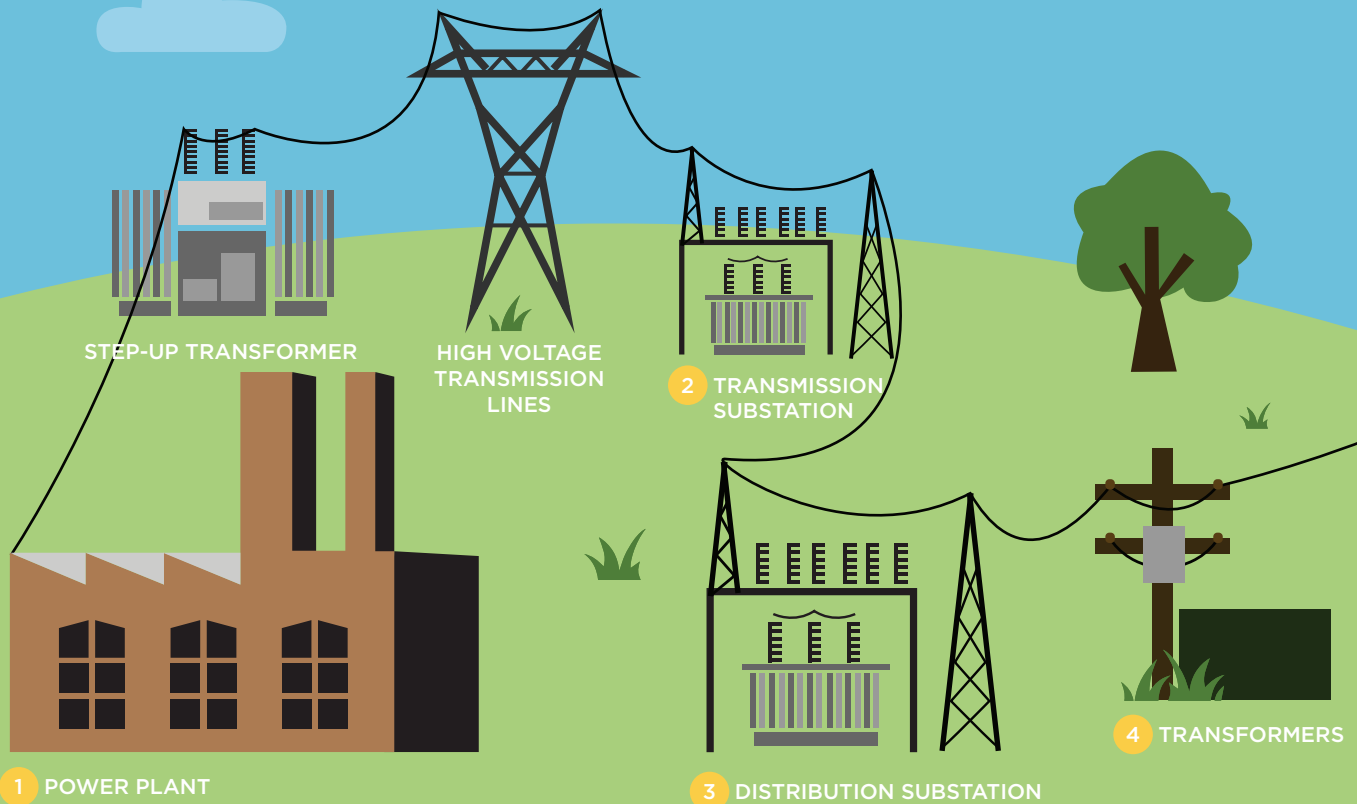
Add this service for convenience and safety. Remotely arm your system, control lighting, lock your doors and change your thermostat setting.

RIGHT CHOICE NEW HOMES

Built for energy efficiency, sustainability, improved indoor air quality, convenience and comfort.

 Learn more at jacksonemc.com/rightchoicewhitehome.

HOW ELECTRICITY GETS TO YOU



1

Power plants generate electricity and send it through a step-up transformer, which raises the voltage level and sends it through transmission lines. These lines are noticeable by the tall steel transmission towers that support them and carry high-voltage power to transmission substations.

2

Transmission substations contain transformers that lower the voltage of electricity and distribute it between lower-voltage lines. These substations can serve tens of thousands of customers, as well as commercial and industrial facilities.

3

Distribution substations further lower the voltage of electricity and distribute the power to cities and towns through distribution lines, which serve hundreds of customers.

DON'T TOY WITH YOUR SAFETY

Flying kites and remote-controlled toys can be fun, but accidentally making contact with a power line or other electrical equipment can be dangerous and— in some cases — deadly.

When playing outdoors:



Never fly kites, drones, or other remote-controlled toys near power lines.



Stay away from power lines, meters, pad-mounted transformers and electrical boxes.



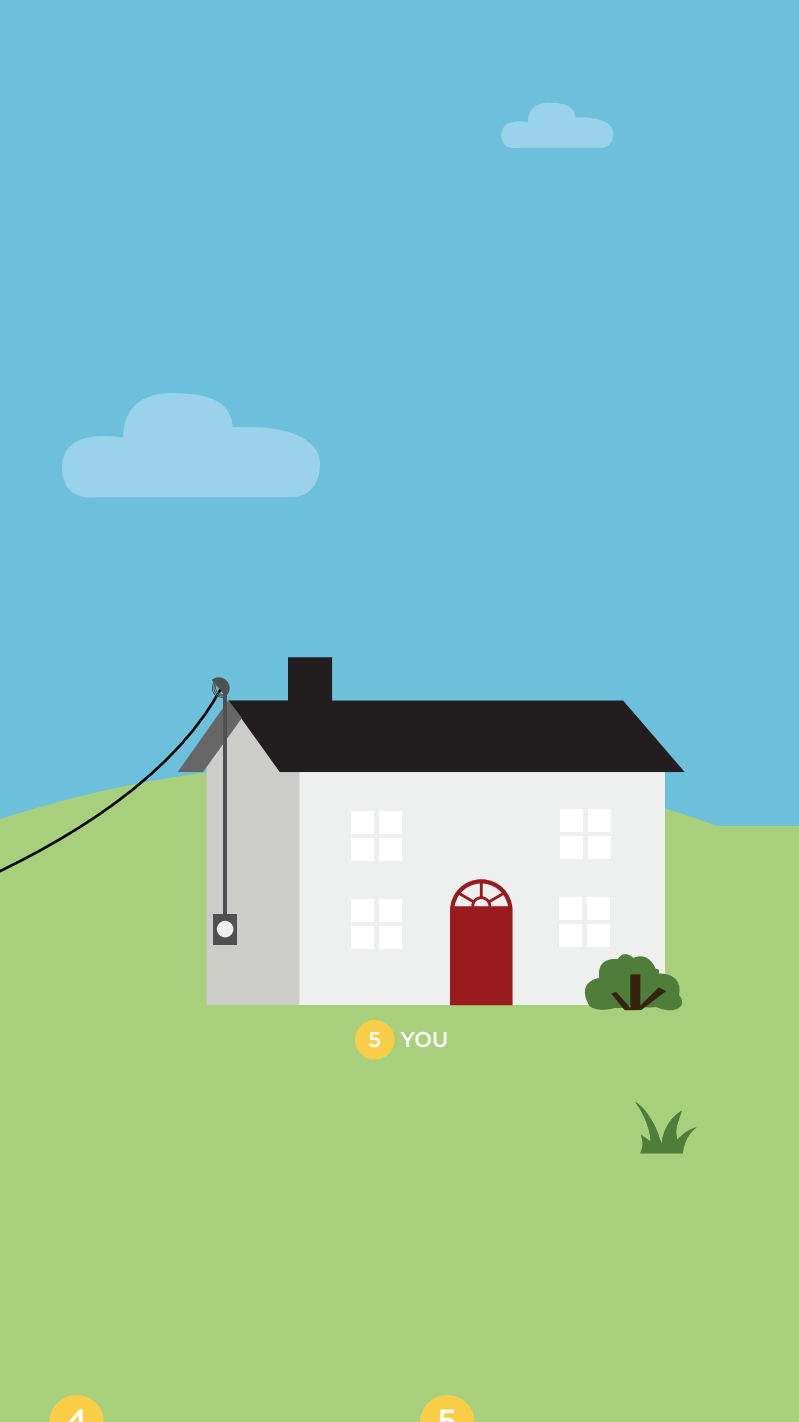
Never climb trees near power lines.



Don't touch or go near downed power lines.



If you get something stuck in a power line, call Jackson EMC at 1-800-462-3691.



5 YOU

4

Transformers are metal, hang on poles and carry lower voltage power to clusters of homes and businesses through branch lines, or distribution lines, which are supported by wood poles. Underground service transformers are contained inside green metal boxes with wires buried beneath the ground.

5

A service drop line connects to your home or business. The voltage from a branch line is lowered through a transformer at the pole to serve a single customer.



“Without the Foundation funding, some people would sit at home without a meal,” she says. “The Jackson EMC Foundation has been a blessing.”

While Madison County Senior Center’s Meals on Wheels offers the homebound nutritious meals, the program provides much more than food. The daily home delivery provides a cheerful check on senior citizens, plus peace of mind for their families.

“When we drive up to deliver a meal, our clients are waiting on us, sometimes at the door, happy to see us, kind and grateful,” says Senior Center Director Kelsey Tyner.

Such is the case with clients Sloan and Ruth Galloway of Hull, who receive a hot lunch from the program each weekday. Ruth suffers from severe arthritis, diabetes, heart and kidney issues that leave her unable to prepare meals. Her husband and caregiver, Sloan, has heart and kidney issues of his own. The couple moved to Georgia in 2014 after a home invasion in Ohio left Sloan with injuries that forced his early retirement.

“I was stabbed 17 times, in the hospital for two months, and had to learn to walk all over again,” says Sloan, a Vietnam veteran who had been employed as a maintenance worker in Ohio. “I used to work all the time and all of a sudden couldn’t do it anymore.”

Sloan and Ruth moved to the area in February, hoping for a fresh start. In March, they signed up for Meals on Wheels.

“The meals really help,” says Sloan. “We save money on food and it’s a good meal that we enjoy having.”

As Jackson EMC members who contribute through Operation Round Up, the couple takes pride in knowing they help themselves—and others—by their donations to the Jackson EMC Foundation. Delivering hot lunches Monday through Friday, Meals on Wheels provides its 60 senior clients with nutrition, independence and socialization, according to Tyner.

“This is a program that goes above and beyond just lunch,” she says. “Our healthy, balanced meals keep people comfortably at home as long as possible. Plus, for seniors who live alone or whose caregivers work during the day, it’s a good resource to have someone visiting in the middle of the day to check on them.”

Since awarding its first \$15,000 grant for Meals on Wheels in May 2006, the Jackson EMC Foundation has granted a total of \$97,500 to the senior center.



TO LEARN MORE ABOUT THE MADISON COUNTY SENIOR CENTER, VISIT MADCOSENIOR.WIX.COM/MCSENIORCENTER

NEED TO KNOW: SUMMER RATES ARE IN EFFECT

SUMMER RATES BEGIN THIS MONTH AND LAST THROUGH SEPTEMBER.

While rates increase during the summer, Jackson EMC’s rates remain low. Ranked among all 94 electric utilities in the state in terms of low cost, our rates were 12th for our summer 2015 rates and 14th among winter 2016 rates.*



TO LEARN MORE ABOUT THE RESIDENTIAL ELECTRIC RATE, VISIT OUR WEBSITE AT JACKSONEMC.COM/RATES AND SELECT THE SCHEDULE A-16 RESIDENTIAL RATE.

SUMMER RATES REGULAR RESIDENTIAL RATE**

Service Charge: \$16 per month

First 650 kWh: 9.12¢ per kWh

Next 350 kWh: 11.37¢ per kWh

Over 1,000 kWh: 11.97¢ per kWh

*According to the Georgia Public Service Commission residential rate survey for an average customer using 1,500 kWh per month.

**The Wholesale Power Cost Adjustment and other applicable taxes are also a part of your total electric bill.

OPERATION ROUNDUP: YOUR DONATIONS AT WORK

The Jackson EMC Foundation
Board of Directors awarded

\$147,528 IN GRANTS

during its March meeting, including
\$144,863 to organizations and
\$2,665 to an individual.

ORGANIZATIONAL GRANT RECIPIENTS:

\$15,000 | For Her Glory

A Gainesville agency that provides breast cancer patients in Banks, Barrow, Franklin, Gwinnett, Hall, Jackson and Lumpkin counties with items not covered by insurance, such as wigs, bras, compression sleeves and gloves.



\$15,000 | Good News Clinics

A nonprofit organization that provides free medical and dental care to the underserved and uninsured residents of Gainesville and Hall County, to ensure clients of its Sam Poole Medical Clinic have laboratory tests necessary for physicians to determine their health care needs and provide appropriate care.

\$15,000 | Hebron Community Health Center

In Lawrenceville, a nonprofit organization providing medical and dental care to low-income, uninsured Gwinnett residents, providing diagnostic follow-up testing, eye exams, prescription glasses and medication, as well as glucose monitors and strips.

\$15,000 | Next Step Foundation

A Lawrenceville grassroots organization that provides social interaction, recreational and life skill learning opportunities to young adults with mild to moderate disabilities in Gwinnett and Hall counties. The fund helps cover an occupational therapist to work with members to develop new skills, adapt tasks for success, become more fully integrated into society and achieve a higher level of independence.

\$15,000 | Norcross Cooperative Ministry

For its Emergency Food Assistance Program that provides families a four to five day supply of non-perishable items once a month for up to six times a year in order to help those experiencing a household crisis, such as a delay in child support, unexpected bills, unemployment or under-employment.



\$15,000 | North Gwinnett

Cooperative Ministry

For its Medication Assistance Program, covering the cost of non-narcotic/controlled substance prescriptions for senior citizens and families that qualify for assistance when the amount of medication is too much or the co-pays are too costly.

\$15,000 | Step by Step Recovery

A Lawrenceville community-based grassroots addiction recovery organization, providing a safe and structured environment for both men and women over six months to two years as they complete a 12-step program to deal with drug and alcohol addiction. The grant assists with rent for men's and women's units.

\$11,463 | Gwinnett County Public Library

To purchase a "pop-up" library featuring a reading room with seating and connectivity that will allow the library to increase access for underserved residents, who could sign up for library cards, see demonstrations of services, engage in portable children's activities and technology tutorials, increasing their access to books, digital resources and other services.

\$10,000 | Junior Achievement of Georgia

For program materials, support materials and supplies, and program development to provide the JA Biztown and JA Finance Park interactive programs at Discovery High School to more than 30,000 Gwinnett County middle school students, teaching them the concepts of financial literacy, business, entrepreneurship and career readiness.

\$6,400 | Citizens Advocacy of Athens/Clarke County

A nonprofit agency that develops one-to-one personal relationships between people with disabilities and local citizens for advocacy and protection, to help pay the salary of a part-time support coordinator.

\$5,000 | New Beginnings Ministry of Franklin County

A faith-based recovery program serving women who have addictions and their families, for its Project S.M.I.L.E. that provides single mothers with room and board, meals, transportation, life-skills education and recovery classes, while providing daycare and playground facilities to keep mothers and their children together during the recovery process.

\$5,000 | Quilts for Kids Northeast Georgia Chapter

A nonprofit organization that uses volunteers to sew comforting quilts that are distributed to children at the Northeast Georgia Medical Center, Athens Regional Medical Center Pediatric Floor, Gateway Domestic Violence Shelter and Family Promise of Hall County, for the purchase of fabric.

\$2,000 | Path Project

A Gwinnett nonprofit dedicated to helping at-risk children close the achievement gap and find the right path for their lives. For its Middle/High Leadership Academy that helps students set goals and work with positive role models to obtain life skills necessary to overcome barriers, succeed academically and graduate high school with a plan for their future.

INDIVIDUAL GRANT RECIPIENTS:

\$2,665 to replace the wheelchair of a woman who was left a paraplegic by a motorcycle accident.

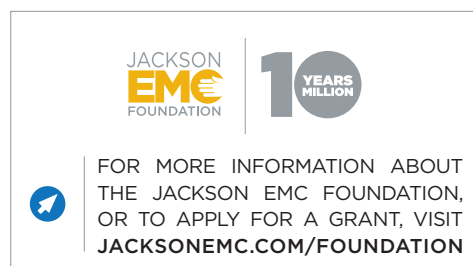


BRIGHT IDEAS APPLICATIONS DUE JUNE 3

The Bright Ideas Grant funds creative and innovative classroom projects for 6th-8th grade middle school teachers within Jackson EMC's service area, earning educators up to \$2,000.

All applications must be completed online and received by Jackson EMC no later than 5 p.m. on Friday, June 3rd. Those received after the deadline will not be considered.

To apply, or for more information, visit jacksonemc.com/brightideas



YOUR POWER.
YOUR COMMUNITY.

A PUBLICATION FOR
JACKSON EMC MEMBERS

JACKSON EMC OFFICES
1000 Dawsonville Highway
Gainesville, GA
(770) 536-2415

85 Spratlin Mill Road
Hull, GA
(706) 548-5362

850 Commerce Road
Jefferson, GA
(706) 367-5281

461 Swanson Drive
Lawrenceville, GA
(770) 963-6166

EMC SECURITY
55 Satellite Blvd., NW
Suwanee, GA
(770) 963-0305 or
(706) 543-4009



PERIODICALS
POSTAGE PAID

jacksonemc.com | @JacksonEMC | jacksonemc | JEMCTV1

MEMBERS MAKE IT DELICIOUS

Slow Cooker BBQ Pork



INGREDIENTS

- 3 pounds boneless pork shoulder
- 2 tubs Knorr® Homestyle Chicken Stock
- 1 cup ketchup
- 1 cup firmly packed brown sugar
- 1/2 cup apple cider vinegar
- 4 tablespoons Dijon mustard
- 4 tablespoons Worcestershire sauce
- 1 teaspoon cayenne pepper
- 1 teaspoon chili powder
- 1 teaspoon pepper flakes
- 10-12 Kaiser Rolls or hamburger buns

DIRECTIONS

Place pork in slow cooker.
Combine remaining ingredients, except rolls.
Pour over pork; turn to coat.
Cover and cook 4-6 hours on HIGH or 8-10 hours on LOW (depending on your slow cooker).
Remove pork and shred with fork; stir back into sauce.
Serve on toasted rolls or buns.

Also good with boneless chicken breasts or thighs.

FEATURED
RECIPES RECEIVE

\$200

PRIZE
PACKAGE

“My husband and three boys request this BBQ almost weekly!” -TAMERA WHITE, BUFORD, GA



SEND YOUR BEST SUMMER GRILLING RECIPES TO: ASORROW@JACKSONEMC.COM OR MAIL TO: COOPERATIVE COOKING | JACKSON EMC | PO BOX 38 | JEFFERSON, GA 30549