

JEMCOnews

A PUBLICATION FOR JACKSON EMC MEMBERS



Working from Home?

**BE SAFE AROUND
ELECTRICITY**



MARCH 2021 | IN THIS ISSUE

- LEARN ABOUT HOME ENERGY EVALUATIONS
- SIGN UP FOR JACKSON EMC'S TIME-OF-USE RATE
- MOVE OVER LAW HELPS PROTECT EMERGENCY, UTILITY WORKERS



STAYING SAFE EVERY DAY

When you think about electricity, think of the ways it impacts our lives – from lighting our homes and operating our heating and cooling systems to powering the batteries for our phones and even vehicles.

Electricity is so integrated in our lives it's easy to lose sight of how dangerous it can be. At Jackson EMC, we take safety seriously. It's important that everyone, including you, stays safe when around electricity.

To keep members and employees safe, all Jackson EMC employees are required to attend mandatory monthly safety meetings addressing topics such as CPR, first aid and fire safety. Employees are trained to identify, respond and report

potential safety issues, along with taking steps to prevent accidents.

Last year, we accomplished an important goal for our cooperative – celebrating going 12 consecutive months, a full year, without a lost-time safety incident. To put this in perspective, our 460 employees worked nearly a million hours without an injury that resulted in time away from work. It takes every employee being aware of how they can prevent workplace injuries, like slipping in a parking lot or staying hydrated while working outdoors in the heat, to achieve such an accomplishment. It's definitely a team effort to keep everyone safe.

Like our employees, we encourage you to be safe every day. Take a moment to look for and address any electrical hazards

around your home. Remember, even small appliances and phone chargers, can cause an electric shock if they're not handled safely. For a list of potential electric hazards to check in your home, visit news.jacksonemc.com/safety-check. We encourage you to take safety seriously to protect you and your family.

Have a suggestion on how we can help better educate members about electrical safety? Send me an email at chip@jacksonemc.com.

Chip Jakins, President/CEO

Home Energy Evaluation Offers High-Tech Energy Efficiency Assessment

The best way to optimize your home's energy efficiency and set you on the path to lower energy bills is to perform a home energy evaluation. Jackson EMC offers home energy evaluations with our representatives using state-of-the-art equipment to diagnose energy ailments in your home.

A home energy evaluation is a series of tests that provide an accurate, computerized assessment of your home's energy efficiency.

With a home energy evaluation, you'll receive a prioritized list of recommendations to improve your home's energy efficiency. Common improvements a home may need include installing additional insulation, air sealing and replacing heating or cooling equipment. Jackson EMC members can receive rebates to offset a portion of the costs of energy efficiency improvements.



Home energy evaluations have a base fee and will incur additional costs for multiple HVAC units. To request an evaluation, call Jackson EMC at 1-800-462-3691 or visit jacksonemc.com/evaluation.



MOVE OVER LAW

Helps Protect Emergency, Utility Workers

If you are driving on Georgia's roads and see a first responder or utility vehicle stopped on the shoulder with its emergency strobe lights on, what should you do? Under the state's Move Over Law, you should move over a lane or slow down to help keep crews safe.

Working alongside busy roadways to install or repair power lines or equipment is a dangerous part of the job for linemen. Move Over Laws, like those enacted in Georgia and across the U.S., help protect emergency and utility workers from passing vehicles while also protecting vehicles from accidents.

Q What does it mean to 'Move Over'?

A. In Georgia, drivers are required to "move over" one lane on the roadway when there are emergency or utility vehicles stopped on the side of the road and working in an official capacity. If you can't move over a lane because it would be unsafe – because other vehicles are in the lane or you're on a two-lane road – then you're required to slow down to a "reasonable and proper speed" that's less than the speed limit. In those cases, drivers should be prepared to stop.

Q What situations does the law cover?

A. The state law applies to emergency vehicles using their flashing lights. This includes police vehicles, fire trucks, ambulances, wrecker operators and highway maintenance operators. In 2016, utility linemen vehicles, like those used by Jackson EMC, were added to the law.

Q Why was this law implemented?

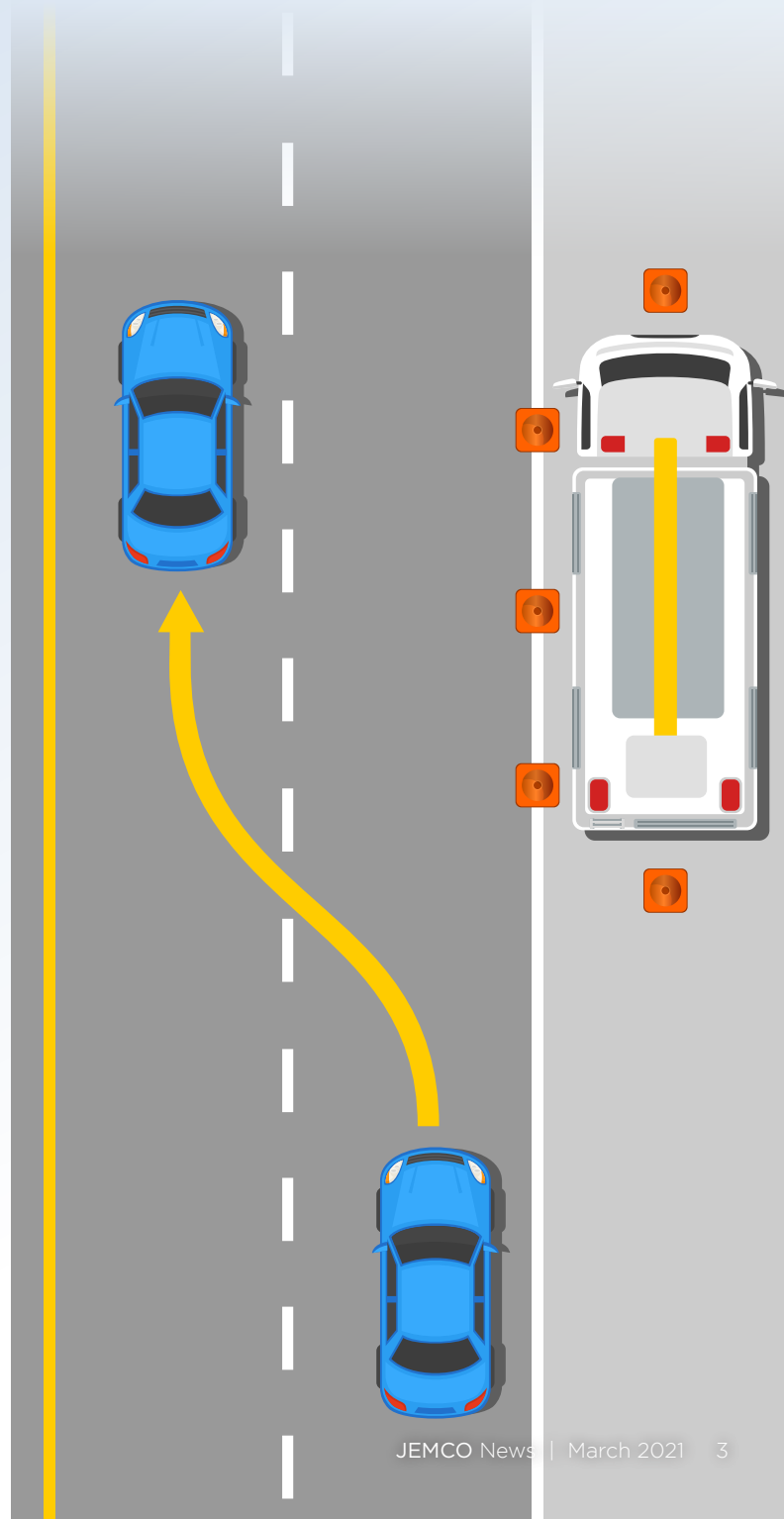
A. The law is focused on reducing the number of injuries and fatalities of those working in a work zone on a road or highway. It can be very dangerous working on the side of the road, especially a busy one. In 2019, there were 38 workers who died from injuries they received while working in a road work zone, according to the Georgia Department of Transportation. Georgia's Move Over Law was passed after the number of police officers, firefighters, emergency technicians and DOT workers killed while working in work zones increased.

Q How does the law help save lives?

A. Working in a work zone on a road or highway can be dangerous. From 2011 to 2015, 609 workers were killed from injuries at road work zones in the U.S., according to the U.S. Bureau of Labor Statistics. By moving over a lane, or slowing down, drivers can give additional space to workers in areas where emergency personnel or utility workers are operating.

Q What are the consequences if drivers don't follow the Move Over Law?

A. According to Georgia's Move Over Law, drivers who fail to obey the state law may face a fine up to \$500.



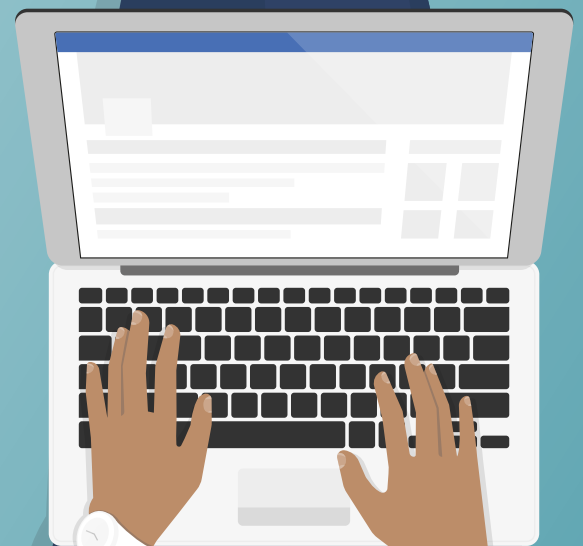
TO LEARN MORE, VISIT THE GOVERNOR'S OFFICE OF
HIGHWAY SAFETY AT GAHIGHWAYSAFETY.ORG.



Working from Home?

BE SAFE AROUND ELECTRICITY

More people are working or learning online from home than ever before. Regardless of where you work or study, it's important to be safe around electricity.



FOR MORE INFORMATION, VISIT THE
ELECTRICAL SAFETY FOUNDATION
INTERNATIONAL AT
ESFI.ORG.

Take an inventory of your home office or school environment and follow these tips to protect yourself and your equipment from electrical hazards.



Avoid overloading electrical outlets by plugging in no more than two appliances per outlet



Ensure all electrical equipment, including computers and monitors, are plugged in to a surge protector



Regularly inspect electrical cords and extension cords for damage



Extension cords should only be used on a temporary basis



Make sure cords do not become tripping hazards



Plug space heaters directly into a wall outlet, instead of an extension cord or power strip, and avoid leaving space heaters unattended



Never run cords under rugs, carpets, doors or windows



Keep electronics, including cellphones and chargers, away from sources of moisture



Keep papers and other potential combustibles at least three feet away from space heaters and other heat sources



Make sure you use proper wattage of bulbs for lamps/lighting

OPERATION ROUND UP: YOUR DONATIONS AT WORK

The Jackson EMC Foundation board of directors awarded a total

\$155,648 in grants

during its January meeting, including \$137,500 to organizations and \$18,148 to individuals.

ORGANIZATIONAL GRANT RECIPIENTS:

\$15,000 | Barrow County Habitat for Humanity, to purchase materials, such as drywall, insulation, plumbing, interior construction and a HVAC unit for a house being built for a partner family.

\$15,000 | Center Point, GA, Inc., in Gainesville, for its Smart Girls program, which focuses on goal planning, social skills education, and decision-making, as well as developing personal responsibility and safety for middle and high school students in Gainesville and Hall County schools.

\$15,000 | Girl Scouts of Historic Georgia, Inc., serving girls in Banks, Barrow, Clarke, Franklin, Hall, Jackson, Lumpkin, Madison and Oglethorpe counties, to help fund the Girl Scout Leadership Experience, which prepares girls with the skills and experiences they need to empower themselves for life.

\$15,000 | Hi-Hope Service Center, in Lawrenceville, to help fund part-time nursing and nutrition services for 20 developmentally disabled Gwinnett County residents who require onsite

nursing care for services such as daily medication, insulin, blood checks and specialized medical treatment.

\$15,000 | Junior Achievement of Georgia, Inc., for program materials, support materials and supplies for the JA Biztown and JA Finance Park interactive programs that teach the concepts of financial literacy, business, entrepreneurship and career readiness to middle school students in Gwinnett County Public Schools.

\$15,000 | Mosaic Georgia, formerly known as Gwinnett Sexual Assault Center & Children's Advocacy Center, based in Duluth, to provide assistance for its Children's Advocacy Center program that includes family aftercare and counseling for clients in Barrow, Clarke, Gwinnett, Hall, and Jackson counties.

\$15,000 | St. Vincent de Paul Society of Lawrenceville, for its financial assistance program that provides funds for rent and mortgage to Gwinnett County families in crisis.

\$10,000 | Catholic Charities of the Archdiocese of Atlanta, to provide support for its mental health counseling program, which works to improve mental functioning and increase coping skills for vulnerable citizens in Gwinnett County through trained bilingual counselors.

\$10,000 | Gainesville/Hall County Alliance for Literacy, to purchase materials and provide instructors for basic literacy classes for adults age 16 and older,

and GED preparation classes for those who have not completed high school.

\$7,500 | Rotary Club of Madison County Foundation, to purchase materials for handicap ramps, which are constructed by Rotary Club members for local individuals who cannot afford them, increasing their general mobility and improving safety in the event they need to evacuate their home.

\$5,000 | Lumpkin County Literacy Coalition, to allow children under the age of five to participate in the Dolly Parton Imagination Library program, which provides monthly age-appropriate books, supporting childhood literacy and success in school.

INDIVIDUAL GRANT RECIPIENTS:

\$5,000 to replace a HVAC unit for a senior citizen.

\$5,000 to help build a handicap accessible bathroom for a senior citizen.

\$5,000 to provide assistance replacing a heating system for a senior citizen.

\$3,148 to provide dental services for a medically fragile patient.



FOR MORE INFORMATION, INCLUDING LATEST GRANT AWARDS AND HOW TO APPLY FOR A GRANT, VISIT JACKSONEMC.COM/FOUNDATION.

Sign Up for Jackson EMC's Time-of-Use Rate

Making small changes to when you use energy—such as cooling your home or doing laundry—could help you save on your electric bill.

By signing up for Jackson EMC's Time-of-Use rate, you can take advantage of a year-round lower electric rate by reducing your energy use between the hours of 3 and 8 p.m. on weekdays from June 1 to September 15.

Reducing your energy use during summer peak periods helps us control the higher costs of producing electricity in the summer. The Time-of-Use rate is an option for people who can shift some of their peak energy use – such as air conditioning – to off-peak hours.

During peak periods (3 to 8 p.m. on weekdays, excluding the Independence

Day and Labor Day holidays, between June 1 to September 15), the cost of electricity per kilowatt hour will be 34.35 cents for participating members.

During off-peak periods, the cost lowers significantly for Time-of-Use participants to only 7.35 cents per kilowatt hour. The normal residential rate is 8.81-11.66 cents per kilowatt hour. The monthly service charge for Time-of-Use members is \$26 per month.

To participate, sign up by May 1. Register by calling 1-800-462-3691 or visiting your local Jackson EMC office.

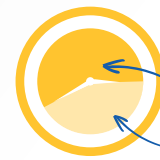


FOR MORE INFORMATION ABOUT TIME-OF-USE RATE, VISIT JACKSONEMC.COM/TIME-OF-USE



REGULAR RESIDENTIAL RATE
(Year-Round)

8.81¢-11.66¢



TIME-OF-USE RATE
(June 1-Sept. 15)

7.35¢ (8 a.m. to 3 p.m. and 8 p.m. to 8 a.m.)

34.35¢ (3-8 p.m. weekdays)



TIME-OF-USE RATE
(Sept. 16-May 31)

7.35¢ (all hours)

Our Neighbor, Inc., in Gainesville, helps people with disabilities gain independence through residential living and working at jobs in the community.

The Jackson EMC Foundation recently awarded the nonprofit organization a \$10,000 grant for housing scholarships to subsidize rent so those with disabilities can live in a house and become more independent. Our Neighbor operates three residential homes—two for men and one for women.

“Many of our residents would face life in a nursing home if it weren’t for the services Our Neighbor provides,” said executive director Mary Margaret Calvert, noting that the Jackson EMC Foundation grant made it possible to immediately add two new residents. “One of them had been on our waiting list for two years. I can’t even tell you how much we appreciate it. I’ve said it a million times, the grants from the Jackson EMC Foundation make a huge difference for us.”

Our Neighbor provides clients the opportunity to live in a residential neighborhood with housemates. All residents are encouraged to increase their independence. Our Neighbor helps them accomplish this by addressing the barriers to self-sufficiency, according to Calvert who says emphasis is placed on promoting lifestyles of fiscal and emotional responsibility.

“We teach life skills, including budgeting, meal planning and preparation, value shopping, personal hygiene, property maintenance and upkeep, and community involvement,” she said. “And we encourage clients to search for employment or volunteer.”

Our Neighbor was established in 2007 by Marty Owens and her son, Randy, who, confined to a wheelchair, recognized limited options for living independently. Calvert has worked with the nonprofit since 2009.

Along with providing a home, Our Neighbor offers an assisted employment program. At The Next Chapter Bookstore in



downtown Gainesville, residents work, earn a paycheck and learn job skills.

“They get up, get dressed and go to work,” Calvert said. “For some, it’s resume building. For others, it’s a job. Either way, they run the bookstore, which reduces the stigma of persons with disabilities as they interact with the public and become productive members of the community. Everybody knows our guys. It’s sweet to watch.”

Three Our Neighbor residents who received job training at the bookstore now work at other jobs – one at a restaurant and two at grocery stores.

Along with housing, job opportunities and life skills training, Our Neighbor provides transportation for residents through a partnership with Avita Community Partners, which takes them to the grocery store and doctor appointments, according to Calvert.

Residents of Our Neighbor consistently show increased mobility, the ability to articulate, and improved health and outlook while seeing a decrease in the need for medication, hospitalization, mental and other health services, according to Calvert.

 FOR MORE INFORMATION ABOUT OUR NEIGHBOR, VISIT OURNEIGHBOR.ORG.

MEMBERS MAKE IT DELICIOUS

Turkey Pot Pie



INGREDIENTS:

- 2 deep dish prepared pie crusts
- 1/4 cup butter or margarine
- 6 Tbsp. flour
- 1 15 oz. cans of Veg-All (drain and reserve liquid)
- 1 cube chicken bouillon
- 2 cups cooked turkey, cubed

DIRECTIONS:

Melt butter or margarine in a large sauce pan. Add flour and stir until smooth. Add two cups of liquid from the Veg-All (add water if necessary to make 2 cups). Add bouillon cube and cook until thickened. You may need to mash the bouillon cube to make it dissolve. Add drained Veg-All and turkey. Pour into pie pan lined with prepared pie crust and top with second crust. Seal the edges by pressing the two crusts together with the tines of a fork. Prick top pie crust with a fork. Bake at 425 degrees for 30 minutes or until crust is brown. Can be prepared in advance and frozen before being baked.



“ This turkey pot pie recipe is easy and delicious. ”

— MARGO TAVSS, GAINESVILLE

SEND US YOUR BEST RECIPES: RECIPES@JACKSONEMC.COM OR MAIL TO:
COOPERATIVE COOKING | JACKSON EMC | PO BOX 38 | JEFFERSON, GA 30549
FIND MORE RECIPES AT WWW.JACKSONEMC.COM/RECIPES.

**YOUR POWER.
YOUR COMMUNITY.**

A PUBLICATION FOR
JACKSON EMC MEMBERS

JACKSON EMC OFFICES

1000 Dawsonville Highway
Gainesville, GA
(770) 536-2415

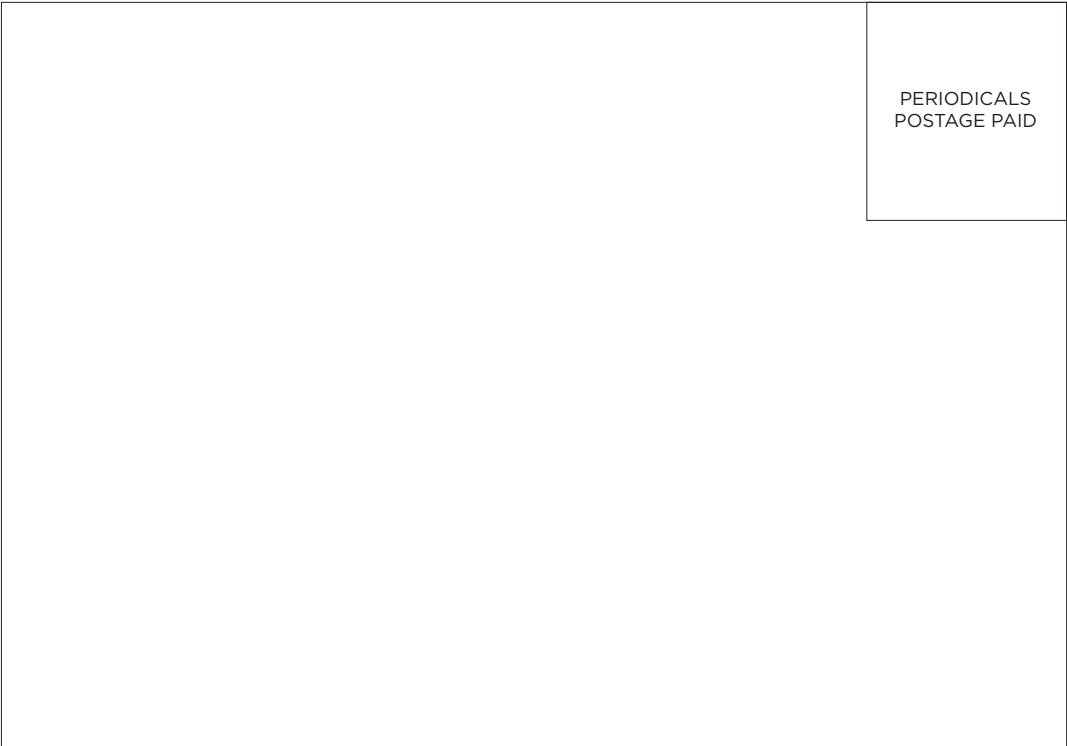
85 Spratlin Mill Road
Hull, GA
(706) 548-5362

850 Commerce Road
Jefferson, GA
(706) 367-5281

825 Buford Dr
Lawrenceville, GA
(770) 963-6166

EMC SECURITY

55 Satellite Blvd., NW
Suwanee, GA
(770) 963-0305 or
(706) 543-4009



PERIODICALS
POSTAGE PAID



@JacksonEMC



jacksonemc



JEMCTV1



jackson_emc



Jackson EMC

jacksonemc.com



Rebates Available for Energy Efficient Upgrades

You can lower your power bill by using energy efficient products, and Jackson EMC will help you pay for qualified products.

When you use energy efficient technologies, the amount of electricity we need to generate decreases, resulting in savings for the cooperative — and our members. That's why we're happy to offer rebates when you purchase certain energy efficient products.

Rebates for electric water heaters, heat pumps (starting at 15 S.E.E.R.) and home energy evaluations are available to Jackson EMC members. Be sure to contact us before making a purchase. Details are available on Jackson EMC's website or by calling your local Jackson EMC office.



**For a list of rebates currently available,
visit jacksonemc.com/rebates.**

Instant rebates for qualified smart thermostats are also available on Jackson EMC Marketplace, our online energy efficiency store, at jacksonemcmarketplace.com.