

JACKSON
ELECTRIC MEMBERSHIP CORPORATION

A PUBLICATION FOR JACKSON EMC MEMBERS

JEMCOnews

A CLEAR PATH FOR POWER

JULY 2018

MARK YOUR CALENDAR: ANNUAL MEETING IS SEPTEMBER 27
CALL 811 BEFORE YOU DIG
JACKSON EMC LINEMEN VOLUNTEER IN BOLIVIAN VILLAGES



SAFE AT A DISTANCE

In the electric utility industry, it's not unusual to read headlines like these from around the country:

"Raccoons cause weekend power outage"

"Snake causes widespread power outage"

And, "Squirrel knocks out power to thousands"

You may wonder how such a small animal can cause so much disruption. Squirrels are well known for causing power outages. There's even a website that tracks news stories of confirmed squirrel-induced outages.

But, here's the reality: Squirrels (and other critters) aren't our number one cause of power outages. Instead, tree limbs and fallen trees on power lines cause far more service interruptions than all the snakes, raccoons and squirrels that unfortunately cross paths with power lines or equipment.

At Jackson EMC, safety and reliability go hand in hand. One of the primary roles of our Tree Maintenance Program is protecting the public. We all know that trees and power lines don't mix. Anytime a tree comes in contact with a power line, it creates a dangerous situation. In order to protect our power lines and equipment, we have a robust Tree Maintenance Program that helps reduce hazards and service interruptions.

Our Tree Maintenance Program makes a big difference when storms threaten to topple trees or cause limbs to fall on power lines. We have a large number of crews who work year-round to trim trees and limbs in the path of our power lines. Jackson EMC uses contractors who

specialize in standardized tree trimming techniques. These professionals are supervised by Jackson EMC personnel to help keep our 14,000-plus miles of power lines free from trees and vegetation.

Clearing these paths from the threat of fallen trees, limbs or from vegetation growth also helps control service costs to our members. If a storm causes a tree or limbs to fall on power lines, the cost to untangle these lines is much higher and takes more time to restore power. In such cases, I'm asked why we don't bury all power lines underground. The truth is the cost would simply be prohibitively high for our cooperative.

While we're talking about trees near power lines, I want to remind you to be aware of your surroundings. If you notice a tree growing into lines, please contact us. Don't try to cut the tree yourself. Trees are good conductors of electricity, so once it starts touching a power line, power can travel through it and create a hazard.

We can't control Mother Nature (or her squirrels), but intentionally keeping a distance between power lines and trees helps improve safety and reduce the possibility of service interruptions for our members.

Have a question about our Tree Maintenance Program? Email me at chip@jacksonemc.com.

Chip Jakins, President/CEO

NEED TO KNOW: ANNUAL MEETING NOTICE TO MEMBERS

Dear Member:

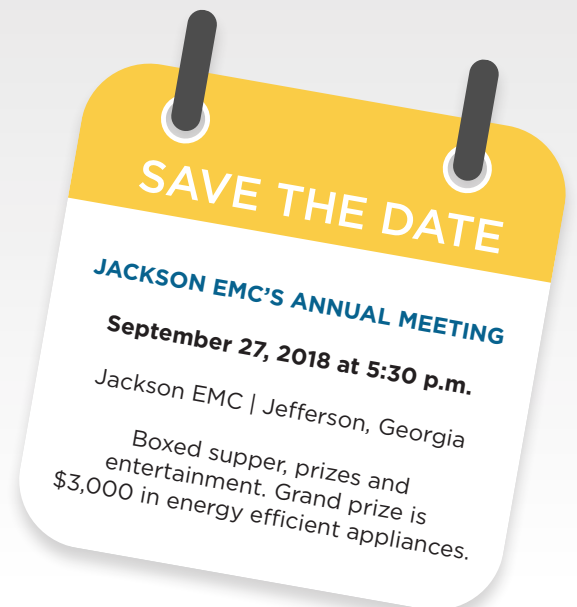
Official notice is hereby given that the 2018 meeting of the members of Jackson Electric Membership Corporation will be held at the headquarters in Jefferson, Ga., on Thursday, September 27, 2018.

Registration will begin at approximately 5:30 p.m. The meeting will be called to order at approximately 7:20 p.m. by the chairperson. The purpose of the meeting is to:

1. Receive reports of officers, directors and committees;
2. Elect three directors; and
3. Handle all other business which may properly come before the meeting or any adjournment thereof.

Prizes, entertainment, a box supper, important business and other special programs will be featured at this meeting. You are requested to be present.

Sincerely, Lynn Price, Secretary, Board of Directors



FLAG COLOR KEY



Proposed Excavation



Temporary Survey Markings



Electric Power Lines, Cables
Conduit and Lighting Cables



Gas, Oil, Steam, Petroleum
or Gaseous Materials



Communication, Alarm or
Signal Lines, Cables or
Conduit



Potable Water



Reclaimed Water, Irrigation
and Slurry Lines



Sewers and Drain Lines



CALL 811 BEFORE YOU DIG

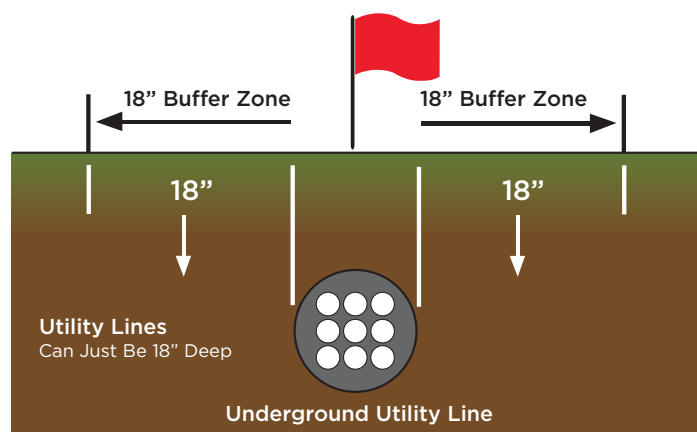
If you're making plans for new landscaping — perhaps even a new deck — make sure you call 811 before you dig.

Underground utilities, such as buried gas, water and electric lines, can be a shovel thrust away from turning your weekend plans for new shrubs, trees or setting a mailbox post into a disaster. Damage to underground lines can result in service interruptions, costly repair bills and fines.

You can play it safe by contacting 811 to identify where utility lines run on your property.

After a request to dig is submitted, Georgia 811 contacts affected utility companies, including Jackson EMC.

Using 811 is free, but homeowners and contractors should contact 811 at least two days prior to digging.



TO SUBMIT A REQUEST, CALL 811 OR VISIT MY.GA811.COM. YOU CAN ALSO VIEW THE STATUS OF AN EXISTING REQUEST AT MY.GA811.COM. FOR ADDITIONAL INFORMATION, VISIT JACKSONEMC.COM/DIG.

A CLEAR PATH FOR POWER

Tree branches and vegetation on power lines is a major cause of power interruptions and outages. To provide reliable, safe and affordable electricity to members, Jackson EMC regularly trims trees and vegetation that threaten to damage our 14,000-plus miles of power lines.



WHAT WE DO

Tree Maintenance Program clearing crews maintain areas clear of all vegetation directly under power lines and **15 feet on either side.**



WHY CLEARING A PATH FOR POWER MATTERS

During storms, trees or tree branches on power lines is one the **major causes of power outages.**

Trees contain water and sap, which are excellent conductors of electricity. If a tree grows into a power line, the **electricity can travel and create an electrocution hazard.**



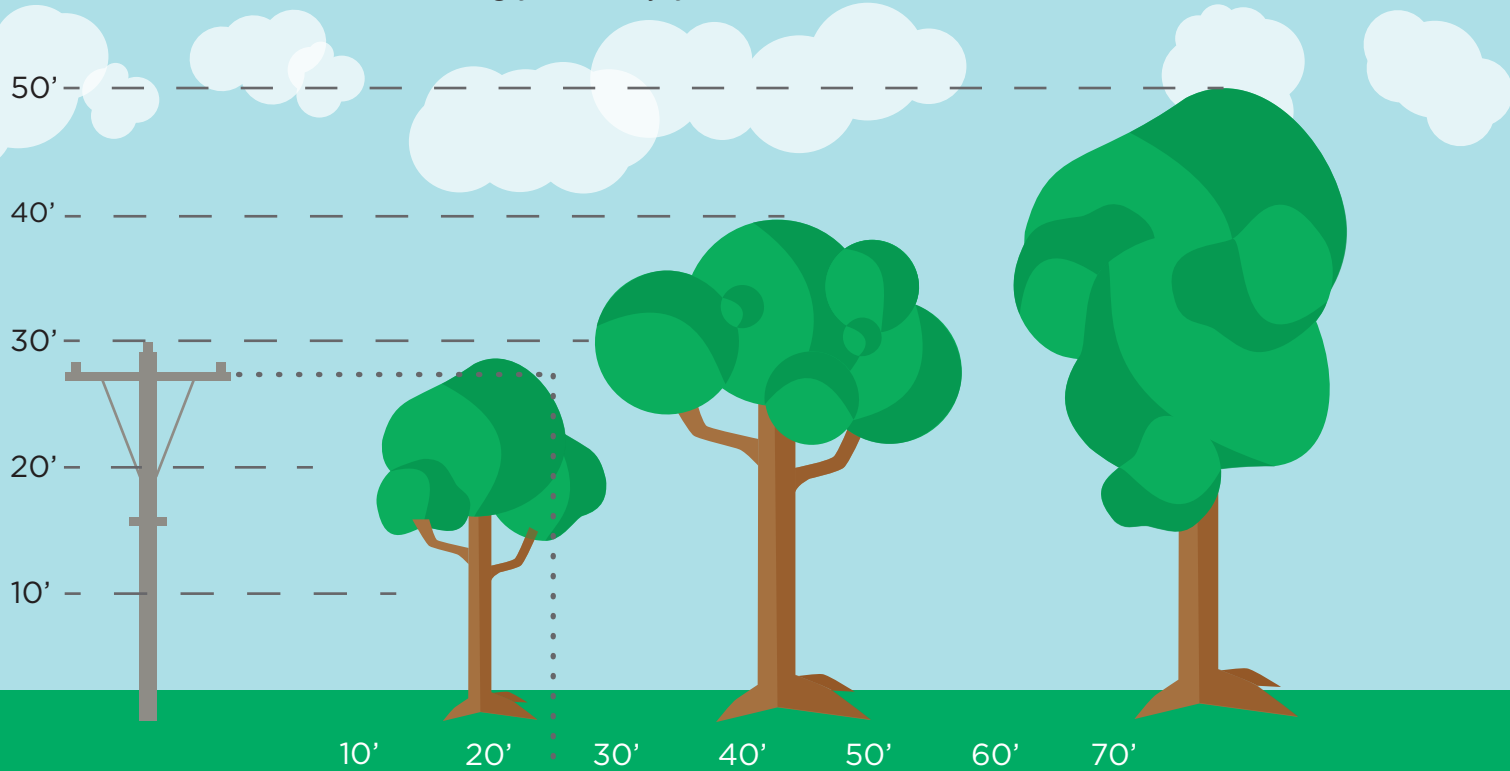
WHAT YOU CAN DO

Keep shrubs and structures at least 10 feet away from a pad-mounted transformer, so workers can safely maintain transformers. Never dig near a pad-mounted transformer because they are surrounded by underground power cables.

Photo by: GreyStone Power

PLANT THE RIGHT TREE IN THE RIGHT PLACE

When a tree's branches start to grow too close to power lines, or touch them, they create a potentially hazardous situation. To reduce the danger, you can plant the right tree in the right place that will enhance the surroundings, while allowing you to enjoy safe, reliable electric service.



SMALL TREES

Avoid planting within 20 feet of power lines. When planting within 20 feet is unavoidable, use only shrubs and small trees. Height/spread of no more than 25 feet, such as: Star Magnolia, Crabapple, Lilac

MEDIUM TREES

Plant at least 40 feet from power lines. Height/spread of 25-40 feet, such as: Washington Hawthorn, American Arborvitae, Eastern Redbud, Goldenrain tree, Dogwoods

LARGE TREES

Plant at least 60 feet from power lines. Height/spread of more than 40 feet, such as: Maple, Birch, Sweetgum, Oak, Spruce, Pine, Linden, Leyland Cypress

**Sources: Arbor Day Foundation & National Rural Electric Cooperation Association (NRECA)*



HOW WE CLEAR TREES & VEGETATION

Safety, service reliability, pruning techniques and aesthetics are all considered.

Trimming is also determined by how fast a tree species grows new branches, how much branches may sway in the wind and voltage in the power line.

Our crews **follow standards set fourth** by organizations, like the Arbor Day Foundation.



WHO CLEARS TREES

Tree maintenance program crews **work year-round** to clear around power lines.

Jackson EMC personnel supervise independent tree-trimming contractors, who are professionals in utility arboriculture.



STAYING SAFE

Never attempt to trim or remove a tree that has power lines running through it. Call Jackson EMC at 1-800-462-3691 to report it.



FOR MORE INFORMATION ABOUT JACKSON EMC'S TREE MAINTENANCE PROGRAM, VISIT JACKSONEMC.COM/TREE.

COMMUNITY IMPACT: *Society of St. Vincent de Paul*

The Society of St. Vincent de Paul has a long history of helping people in need. Founded in Paris in 1833, the society now spans more than 130 countries and all 50 states in the United States.

In North and Central Georgia, there are 71 chapters, called conferences, linked by the common mission of the Society of St. Vincent de Paul to serve the needy. Locally, the conferences in Winder, Flowery Branch, Jefferson and Gainesville have each recently received grants from the Jackson EMC Foundation to provide assistance for those in need, primarily for housing assistance.

When a family is facing eviction from their home, they may reach out to a local conference for assistance.

"Eviction is a proven way to be long-term poor," said Mike Gallagher of the Flowery Branch conference.

The hallmark of the Society of St. Vincent de Paul is in-home visits between volunteers and those seeking assistance. The volunteers, called "Vincentians," determine how the nonprofit organization can best serve them or point them to available resources, including those provided by other organizations. Many local conferences also provide a food pantry, thrift store and help line.

Ed Flaherty has been volunteering with the Winder conference for 12 years. The in-home visits, he says, helps volunteers understand the needs of those seeking assistance.

"It's more beneficial when it's face-to-face with someone and their situation," he said.

Oftentimes, job loss or medical bills are the top reasons why people are unable to afford their rent and mortgages, according to Gallagher. Along with a home visit, St. Vincent volunteers also perform administrative work to verify with landlords or banks the status of an applicant's housing assistance needs. Volunteers may also be able to work with landlords on behalf of applicants for payment options.

Despite the improved economy, Gallagher said volunteers are still helping with a high number of requests for housing assistance.

"Rents and mortgages have been skyrocketing for the past few years," he said.

"People do need help and it's a reality," said Flaherty of Winder. "We try to help people maintain their dignity while giving them assistance."

He added: "With the Jackson EMC Foundation grant, we can do more to help more people. It's a real blessing."

The Jackson EMC Foundation recently awarded \$10,000 grants to each of the Society of St. Vincent de Paul Society conferences in Winder, Jefferson and Flowery Branch.

The grant for the Flowery Branch conference will help its Aid Hot Line program, which provides emergency aid to South Hall, North Gwinnett and West Jackson families in crisis for rent, mortgage and temporary housing to prevent homelessness and disrupted lives. The Gainesville grant will help fund direct aid for housing assistance, including rent, mortgage and temporary housing for Hall County families in crisis. The Jackson County grant will help its financial assistance program that provides funds to Jackson and Banks County families in crisis for rent, mortgage, food, transportation, car repair and insurance premiums, and medical assistance.

The grant for the Barrow County conference will help its financial assistance program that provides funds to Barrow County families in crisis for rent, mortgage and food.



FOR MORE INFORMATION, INCLUDING HOW TO REQUEST FOR SUPPORT, VISIT SDVPGEORGIA.ORG.

OPERATION ROUNDUP: YOUR DONATIONS AT WORK

The Jackson EMC Foundation board of directors awarded a total

\$66,000 IN GRANTS

during its May meeting, including \$56,000 to organizations and \$10,000 to an individual.

ORGANIZATIONAL GRANT RECIPIENTS:

\$15,000 | Hope Clinic, in Gwinnett County, which specializes in internal medicine and chronic care management for low-income patients to help them avoid costly hospitalizations, for one year of care in the Chronic Care Management Program for diabetic patients who qualify as extremely low income, per federal guidelines.

\$15,000 | Wish 4 Me, a Lawrenceville charitable organization that provides housing for low-income disabled adults in Jackson EMC's service area so they may live independently and be a part of the community, to help purchase a new septic tank for a community home that will enable them to accommodate more residents.

\$7,000 | Quinlan Visual Arts Center, in Gainesville, to help provide for free or reduced cost art projects, classes and camps for children and teens in underserved communities in Hall County.

\$5,000 | Angel House, a Gainesville recovery residence for women with alcohol and/or drug addiction, to enable women with no financial resources or support in the Jackson EMC service area to participate in the 12-month program by covering entrance fees, offering these women a second chance at life so they can become productive members of society.

\$5,000 | Athens Community Council on Aging, serving Barrow, Clarke, Jackson and Madison counties, for healthcare screenings and monitoring for families participating in the Grandparents Raising Grandchildren program, which supports grandparents who are primary caregivers for their grandchildren.

\$5,000 | Georgia Options, an Athens-based nonprofit organization serving Barrow, Clarke, Gwinnett, Jackson, Madison and Oglethorpe counties, to help provide services and resources for people with developmental disabilities to live in their own homes.

\$4,000 | Legacy Youth Mentoring, a nonprofit organization that seeks to offer in-school mentoring opportunities for adults and students in Jackson County, to provide training resources and publications for adult mentors.



*Photo Courtesy of Legacy Youth Mentoring

INDIVIDUAL GRANT RECIPIENTS:

\$5,000 to provide roof repairs for a retired veteran in Hall County.

\$5,000 to assist in purchasing a vehicle wheelchair lift for the disabled adult son of a senior citizen.



FOR MORE INFORMATION AND TO APPLY FOR A GRANT, VISIT JACKSONEMC.COM/FOUNDATION.

JACKSON EMC LINEMEN RETURN TO ROOTS OF LINE WORK VOLUNTEERING IN BOLIVIAN VILLAGES



Tommy Minish

Four Jackson EMC linemen recently joined a volunteer team that traveled to Bolivia to bring electricity to two remote villages in the Andes Mountains. Jackson EMC partnered with Carroll EMC, Cobb EMC, Coweta-Fayette EMC, and Flint Energies to send a total of 11 linemen to build nine miles of line. Their work brought electricity to the agricultural villages of San Isidro and Murmutani, which had waited 10 years for access.

Gary Davis and Chris Wallace, journeyman linemen from Jackson EMC's Gwinnett district, and Greg Angel and Tommy Minish, from the cooperative's Neese district, were members of the team that brought light to 38 families.



The most significant challenge they faced was the high altitude, which made the team concerned about completing the assignment.

"You walked 10-15 feet and had to stop and catch your breath, so trying to climb a pole made it even harder at 13,000 feet above sea level," Davis said.

"It was harder than expected," Minish said. "It took us about four days to adjust to the altitude."



Greg Angel

Without modern equipment, the linemen walked pole to pole in hard terrain, often on the side of mountains.

"Their way of building lines is different; it's really an old way," Angel said. "So we had to step back in time."

Minish added: "It was primitive work, back to the roots of line work. We didn't have enough tools and it was all by-hand."

This project was made possible by NRECA International, a non-profit 501(c)(3) charitable organization, whose mission is to increase individual and community access to electricity in all parts of the world.

**YOUR POWER.
YOUR COMMUNITY.**

A PUBLICATION FOR
JACKSON EMC MEMBERS

JACKSON EMC OFFICES
1000 Dawsonville Highway
Gainesville, GA
(770) 536-2415

85 Spratlin Mill Road
Hull, GA
(706) 548-5362

850 Commerce Road
Jefferson, GA
(706) 367-5281

825 Buford Drive
Lawrenceville, GA
(770) 963-6166

EMC SECURITY
55 Satellite Blvd., NW
Suwanee, GA
(770) 963-0305 or
(706) 543-4009



@JacksonEMC jacksonemc JEMCTV1 jackson_emc Jackson EMC

jacksonemc.com

PERIODICALS
POSTAGE PAID

MEMBERS MAKE IT DELICIOUS

Cool Strawberry Pie



INGREDIENTS:

- 1 pint frozen sweetened strawberries, halved
- 1 can condensed milk (12 oz.)
- 1/4 cup lemon juice
- 1 container Cool Whip
- 1/2 cup chopped pecans
- 2 graham cracker pie crusts

DIRECTIONS:

In a large bowl, stir lemon juice thoroughly with condensed milk. Add strawberries, Cool Whip and pecans. Pour mixture equally in to crusts. Refrigerate at least 6 hours or overnight before serving. Pies may be frozen.

“ My family has been enjoying this desert since the early 1980s. With the recipe making two pies, it's great for large gatherings so there is plenty for all. It freezes easily so you can make ahead, or just save one for a future occasion. Perfect for a light, cool treat after a summer BBQ. But be prepared, everyone will want more! ”

- JANICE GARMON, LAWRENCEVILLE



SEND YOUR BEST RECIPES: RECIPES@JACKSONEMC.COM OR MAIL TO:
COOPERATIVE COOKING | JACKSON EMC | PO BOX 38 | JEFFERSON, GA 30549
FIND MORE RECIPES AT WWW.JACKSONEMC.COM/RECIPES